

# \$399,900 - 738 18 Street N, Lethbridge

MLS® #A2254626

**\$399,900**

4 Bedroom, 3.00 Bathroom, 1,173 sqft

Residential on 0.10 Acres

Westminster, Lethbridge, Alberta

NEW PRICE: \$409,900 - Built in 2004 and located in an established neighborhood, this 4-bedroom, 2.5-bathroom home offers 1900 sq. ft. of developed living space and is sure to impress. You'll love the inviting, cottage-style curb appeal and the functional layout throughout.

The main floor features a versatile bedroom/office, an open-concept living and dining area, a spacious kitchen, and a convenient powder room for guests. Upstairs, the primary bedroom is generously sized, accompanied by another bedroom and a full 4-piece bathroom. The lower level adds even more living space with a large family room, an additional bedroom, and plenty of room for movie nights or entertaining.

Step outside to enjoy a fully fenced backyard complete with a deck, patio area, and plenty of space to relax or gather.

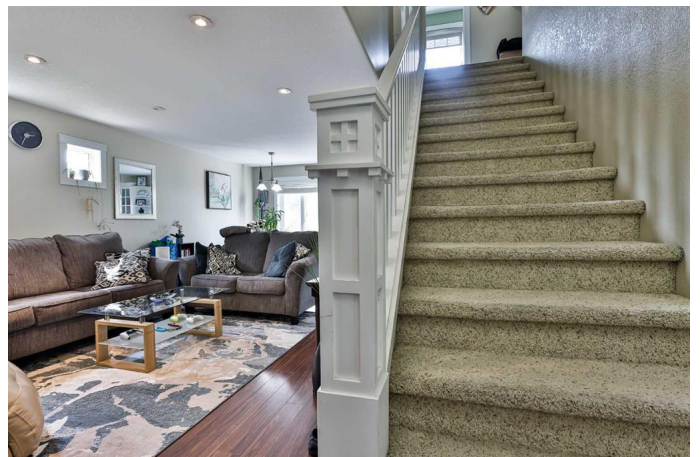
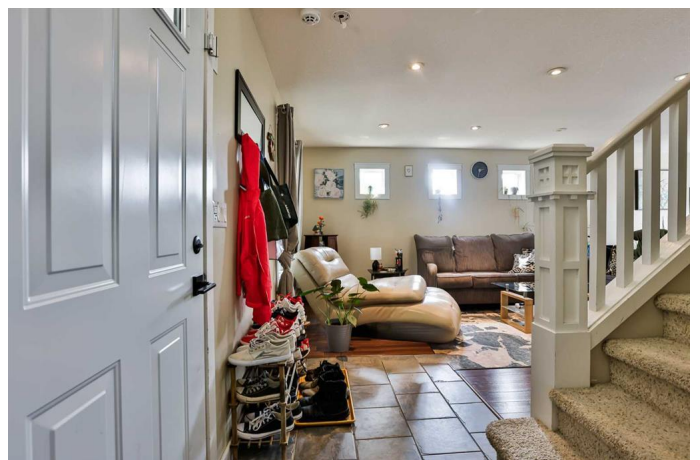
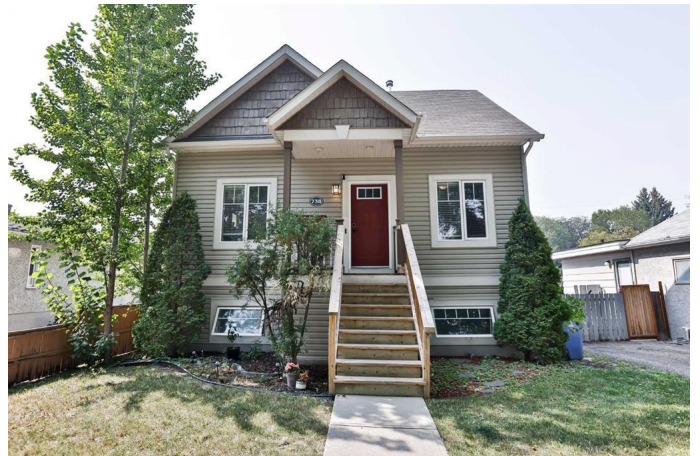
Be sure to browse the photos and take the virtual tour to see if this home checks all the boxes for you.

Built in 2004

## Essential Information

MLS® # A2254626

Price \$399,900



Bedrooms	4
Bathrooms	3.00
Full Baths	2
Half Baths	1
Square Footage	1,173
Acres	0.10
Year Built	2004
Type	Residential
Sub-Type	Detached
Style	2 Storey
Status	Active

### **Community Information**

Address	738 18 Street N
Subdivision	Westminster
City	Lethbridge
County	Lethbridge
Province	Alberta
Postal Code	T1H 3G8

### **Amenities**

Parking Spaces	1
Parking	Off Street

### **Interior**

Interior Features	Breakfast Bar, Open Floorplan
Appliances	Range Hood, Refrigerator, Stove(s), Washer/Dryer
Heating	Forced Air
Cooling	None
Fireplace	Yes
# of Fireplaces	1
Fireplaces	Electric
Has Basement	Yes
Basement	Finished, Full

### **Exterior**

Exterior Features	None
Lot Description	Back Lane, Back Yard, Landscaped
Roof	Asphalt Shingle

Construction	Vinyl Siding, Wood Frame
Foundation	Wood

### **Additional Information**

Date Listed	September 5th, 2025
Days on Market	34
Zoning	R-L(W)

### **Listing Details**

Listing Office	RE/MAX REAL ESTATE - LETHBRIDGE
----------------	---------------------------------

Data is supplied by Pillar 9â„¢ MLSÂ® System. Pillar 9â„¢ is the owner of the copyright in its MLSÂ® System. Data is deemed reliable but is not guaranteed accurate by Pillar 9â„¢. The trademarks MLSÂ®, Multiple Listing ServiceÂ® and the associated logos are owned by The Canadian Real Estate Association (CREA) and identify the quality of services provided by real estate professionals who are members of CREA. Used under license.