

\$139,900 - 203, 1804 48, Lloydminster

MLS® #A2237104

\$139,900

2 Bedroom, 1.00 Bathroom, 820 sqft

Residential on 0.00 Acres

Wallacefield, Lloydminster, Saskatchewan

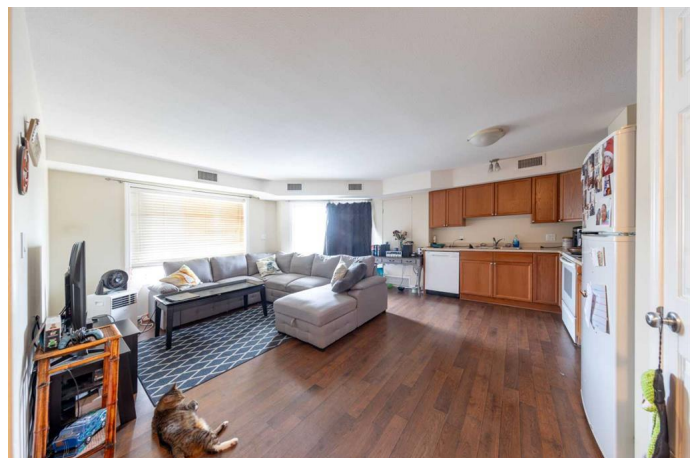
Step into home ownership with this fantastic 2-bedroom condo, perfect for first-time buyers or anyone looking to downsize. This north-facing corner unit is filled with natural light and features in-unit laundry for added convenience. Stay cool in the summer with central air conditioning and enjoy the comfort of a well-kept space. Located in a great neighbourhood, you'll appreciate the quiet surroundings and easy access to nearby amenities. A solid choice in a welcoming area—don't miss your chance to get into the market!

Built in 2006

Essential Information

MLS® #	A2237104
Price	\$139,900
Bedrooms	2
Bathrooms	1.00
Full Baths	1
Square Footage	820
Acres	0.00
Year Built	2006
Type	Residential
Sub-Type	Apartment
Style	Multi Level Unit
Status	Active

Community Information



Address	203, 1804 48
Subdivision	Wallacefield
City	Lloydminster
County	Lloydminster
Province	Saskatchewan
Postal Code	S9V 1K2

Amenities

Amenities	Trash, Visitor Parking
Parking Spaces	1
Parking	Stall

Interior

Interior Features	Open Floorplan, Pantry
Appliances	Central Air Conditioner, Dishwasher, Dryer, Refrigerator, Stove(s), Washer
Heating	Forced Air, Natural Gas
Cooling	Other
# of Stories	3

Exterior

Exterior Features	Balcony
Roof	Asphalt Shingle
Construction	Vinyl Siding, Wood Frame

Additional Information

Date Listed	July 7th, 2025
Days on Market	12
Zoning	Medium Density Residential

Listing Details

Listing Office	RE/MAX OF LLOYDMINSTER
----------------	------------------------

Data is supplied by Pillar 9â„¢ MLS® System. Pillar 9â„¢ is the owner of the copyright in its MLS® System. Data is deemed reliable but is not guaranteed accurate by Pillar 9â„¢. The trademarks MLS®, Multiple Listing Service® and the associated logos are owned by The Canadian Real Estate Association (CREA) and identify the quality of services provided by real estate professionals who are members of CREA. Used under license.