

\$249,900 - (h17 Mall Unit) 183, 260300 Writing Creek Crescent Ne, Rural Rocky View County

MLS® #A2234341

\$249,900

0 Bedroom, 0.00 Bathroom,
Commercial on 0.01 Acres

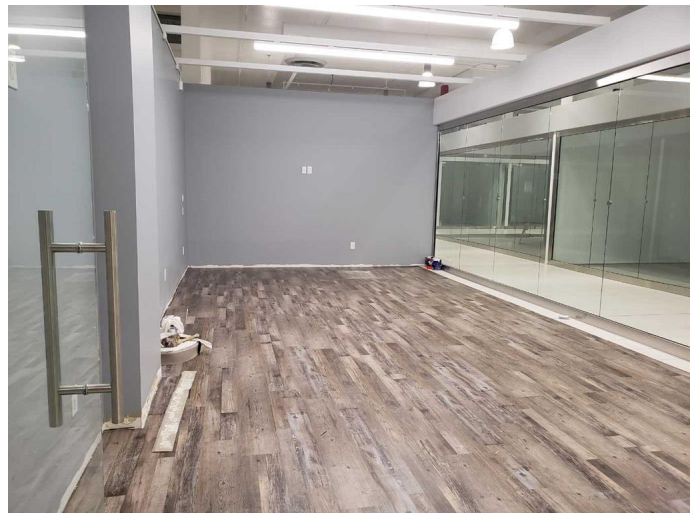
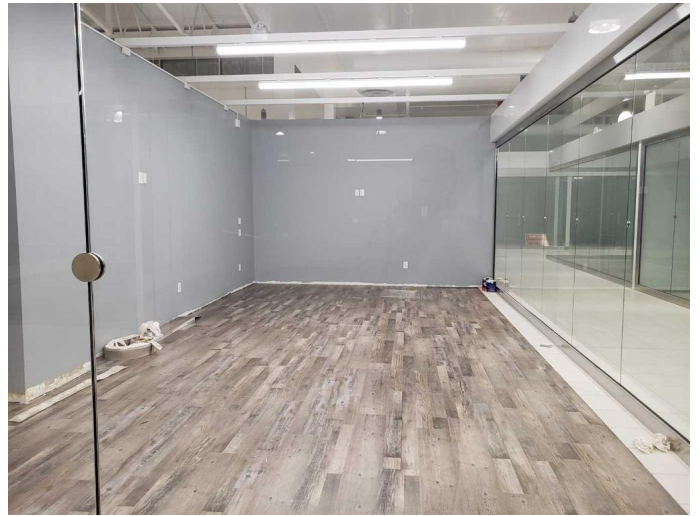
NONE, Rural Rocky View County, Alberta

Unit H17 Triple Unit in the center of the mall.
Close to Stage. Lots of foot traffic.

Built in 2018

Essential Information

MLS® #	A2234341
Price	\$249,900
Bathrooms	0.00
Acres	0.01
Year Built	2018
Type	Commercial
Sub-Type	Mixed Use
Status	Active



Community Information

Address	(h17 Mall Unit) 183, 260300 Writing Creek Crescent Ne
Subdivision	NONE
City	Rural Rocky View County
County	Rocky View County
Province	Alberta
Postal Code	T4A 0X8

Additional Information

Date Listed	June 24th, 2025
Days on Market	5
Zoning	C2

Listing Details

Listing Office

eXp Realty

Data is supplied by Pillar 9â„¢ MLSÂ® System. Pillar 9â„¢ is the owner of the copyright in its MLSÂ® System. Data is deemed reliable but is not guaranteed accurate by Pillar 9â„¢. The trademarks MLSÂ®, Multiple Listing ServiceÂ® and the associated logos are owned by The Canadian Real Estate Association (CREA) and identify the quality of services provided by real estate professionals who are members of CREA. Used under license.