

\$94,900 - 29, 25039 Township Road 722, Rural Grande Prairie No. 1, County of

MLS® #A2233830

\$94,900

0 Bedroom, 0.00 Bathroom,
Land on 3.17 Acres

Rio Bend Estates., Rural Grande Prairie No. 1,
County of, Alberta

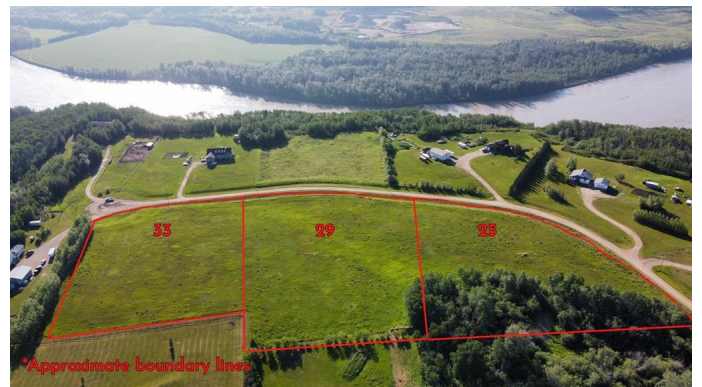
One of three adjoining vacant lots for sale in Rio Bend Estates. Located 25 minutes east of Grande Prairie, just a few minutes away from the hamlet of Bezanson, overlooking the Smoky River valley is this fantastic 3.17 acre parcel. Buy the lot, pick your plan, and choose your own builder. And with a lot for sale on either side you could double up your land size or have your friend or family member buy beside you and know who your neighbors will be! Take a drive out and have a look or contact your favorite Real Estate Professional for more information.

Essential Information

MLS® #	A2233830
Price	\$94,900
Bathrooms	0.00
Acres	3.17
Type	Land
Sub-Type	Residential Land
Status	Active

Community Information

Address	29, 25039 Township Road 722
Subdivision	Rio Bend Estates.
City	Rural Grande Prairie No. 1, County of



County	Grande Prairie No. 1, County of
Province	Alberta
Postal Code	T0H 0G0

Additional Information

Date Listed	June 23rd, 2025
Days on Market	4
Zoning	CR-4

Listing Details

Listing Office	Royal LePage - The Realty Group
----------------	---------------------------------

Data is supplied by Pillar 9â„¢ MLS® System. Pillar 9â„¢ is the owner of the copyright in its MLS® System. Data is deemed reliable but is not guaranteed accurate by Pillar 9â„¢. The trademarks MLS®, Multiple Listing Service® and the associated logos are owned by The Canadian Real Estate Association (CREA) and identify the quality of services provided by real estate professionals who are members of CREA. Used under license.