

\$635,000 - 342 Sixmile Ridge S, Lethbridge

MLS® #A2228185

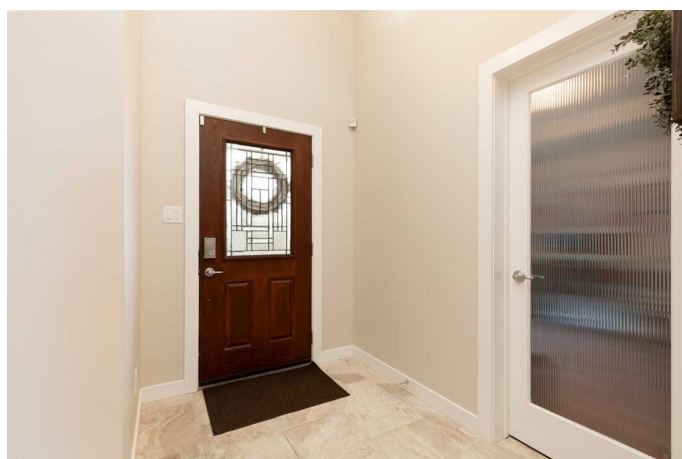
\$635,000

4 Bedroom, 3.00 Bathroom, 1,393 sqft

Residential on 0.12 Acres

Southgate, Lethbridge, Alberta

Welcome to 342 Sixmile Ridge S, a beautifully appointed bungalow nestled in a quiet, sought-after neighbourhood on the south side of Lethbridge. Offering nearly 1,400 square feet of thoughtfully designed living space, this home impresses with soaring vaulted ceilings and rich hardwood floors that flow seamlessly through the main living areas. The heart of the home is the elegant kitchen, featuring timeless wood cabinetry, granite countertops, stainless steel appliances, a corner pantry, and a spacious dining area perfect for gatherings. The living room is warm and inviting, centered around a striking floor-to-ceiling rock-faced gas fireplace that adds both charm and comfort. The generous primary suite offers a peaceful retreat with a large walk-in closet and a spa-inspired 4-piece en-suite complete with a separate tub and shower. A versatile flex room at the front of the home provides the option for a second bedroom or private office, while a stylish half bath and convenient main floor laundry complete the layout. The fully developed basement extends the living space with an expansive family room, two additional bedrooms, and a well-appointed 4-piece bathroom. Outdoors, enjoy a low-maintenance backyard with artificial turf surrounded by established flower beds, a partially covered deck perfect for relaxing or entertaining, and underground sprinklers in both the front and back yards. Additional features include a 25x23 attached garage with soaring ceilings and ample room for storage. Surrounded by



wonderful neighbours in a peaceful setting,
this home effortlessly blends comfort, style,
and functionality.

Built in 2014

Essential Information

| | |
|----------------|-------------|
| MLS® # | A2228185 |
| Price | \$635,000 |
| Bedrooms | 4 |
| Bathrooms | 3.00 |
| Full Baths | 2 |
| Half Baths | 1 |
| Square Footage | 1,393 |
| Acres | 0.12 |
| Year Built | 2014 |
| Type | Residential |
| Sub-Type | Detached |
| Style | Bungalow |
| Status | Active |

Community Information

| | |
|-------------|---------------------|
| Address | 342 Sixmile Ridge S |
| Subdivision | Southgate |
| City | Lethbridge |
| County | Lethbridge |
| Province | Alberta |
| Postal Code | T1K 5W8 |

Amenities

| | |
|----------------|---|
| Parking Spaces | 4 |
| Parking | Concrete Driveway, Double Garage Attached |
| # of Garages | 2 |

Interior

| | |
|-------------------|------------------------------------|
| Interior Features | Pantry, Storage, Walk-In Closet(s) |
| Appliances | See Remarks |
| Heating | Forced Air |
| Cooling | Central Air |

| | |
|-----------------|----------------|
| Fireplace | Yes |
| # of Fireplaces | 1 |
| Fireplaces | Gas |
| Has Basement | Yes |
| Basement | Finished, Full |

Exterior

| | |
|-------------------|--|
| Exterior Features | Private Yard, Storage |
| Lot Description | Back Yard, Front Yard, Fruit Trees/Shrub(s), Landscaped, Standard Shaped Lot |
| Roof | Asphalt Shingle |
| Construction | Brick, Cement Fiber Board |
| Foundation | Poured Concrete |

Additional Information

| | |
|----------------|----------------|
| Date Listed | June 5th, 2025 |
| Days on Market | 46 |
| Zoning | R-L |

Listing Details

| | |
|----------------|----------------------------|
| Listing Office | Lethbridge Real Estate.com |
|----------------|----------------------------|

Data is supplied by Pillar 9â„¢ MLS® System. Pillar 9â„¢ is the owner of the copyright in its MLS® System. Data is deemed reliable but is not guaranteed accurate by Pillar 9â„¢. The trademarks MLS®, Multiple Listing Service® and the associated logos are owned by The Canadian Real Estate Association (CREA) and identify the quality of services provided by real estate professionals who are members of CREA. Used under license.