

\$195,000 - 205, 10046 Township Road 422 Road, Rural Ponoka County

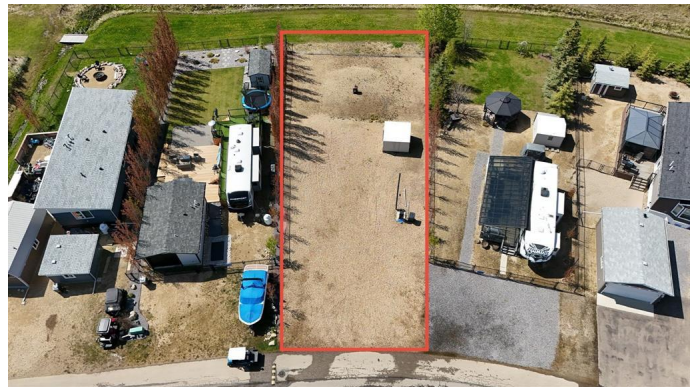
MLS® #A2224397

\$195,000

0 Bedroom, 0.00 Bathroom,
Land on 0.18 Acres

Raymond Shores, Rural Ponoka County,
Alberta

Your dream lakefront retreat awaits. Located in the gated community of Raymond Shores on the northeast side of Gull Lake, this bare lot offers the perfect opportunity to customize your lakefront oasis. Whether it's a weekend getaway or a year-round retreat, this property features direct lake access, unbeatable views, and endless potential to design your own personal touch to the lot. Raymond Shores is a well-maintained, family-friendly community with everything you need to enjoy all four seasons. The clubhouse near the entrance includes an indoor pool, hot tub, fitness area, and space for community events and gatherings. You'll also find two spacious marinas, a boat launch, plenty of green space, and a playground for the kids to enjoy. Located just 20 minutes from the City of Lacombe and 40 minutes from the City of Red Deer, Raymond Shores offers endless opportunities for boating, fishing, or just relaxing by the water. Join the Raymond Shores community and start living your dream lake life today.



Essential Information

MLS® #	A2224397
Price	\$195,000

Bathrooms	0.00
Acres	0.18
Type	Land
Sub-Type	Recreational
Status	Active

Community Information

Address	205, 10046 Township Road 422 Road
Subdivision	Raymond Shores
City	Rural Ponoka County
County	Ponoka County
Province	Alberta
Postal Code	T4J 1V9

Amenities

Amenities	Clubhouse, Fitness Center, Laundry, Park, Picnic Area, Playground, Racquet Courts, Recreation Facilities, Snow Removal, Trash, Visitor Parking, Beach Access, Boating, Coin Laundry, Dry Dock, Gazebo, Indoor Pool, Pool, Party Room, Recreation Room, Spa/Hot Tub
Is Waterfront	Yes
Waterfront	Beach Access, Beach Front, Canal Access, Lake, Waterfront

Exterior

Exterior Features	None
Lot Description	Private, Waterfront

Additional Information

Date Listed	May 29th, 2025
Days on Market	15
Zoning	18

Listing Details

Listing Office	RE/MAX Key
----------------	------------

Data is supplied by Pillar 9â„¢ MLSÂ® System. Pillar 9â„¢ is the owner of the copyright in its MLSÂ® System. Data is deemed reliable but is not guaranteed accurate by Pillar 9â„¢. The trademarks MLSÂ®, Multiple Listing ServiceÂ® and the associated logos are owned by The Canadian Real Estate Association (CREA) and identify the quality of services provided by real estate professionals who are members of CREA. Used under license.