

\$344,000 - 14 Cataract Road Sw, High River

MLS® #A2221836

\$344,000

3 Bedroom, 2.00 Bathroom, 1,136 sqft

Residential on 0.01 Acres

McLaughlin Meadows, High River, Alberta

This condo in the quiet west end of High River, close to outdoor skating, walking paths and nature reserve. This unit is great for a young family with good size bedrooms and an unfinished basement to develop as you choose. Area is a quiet community with easy access to schools, downtown and the southeast commercial district. This community is a great place to start or raise your family.

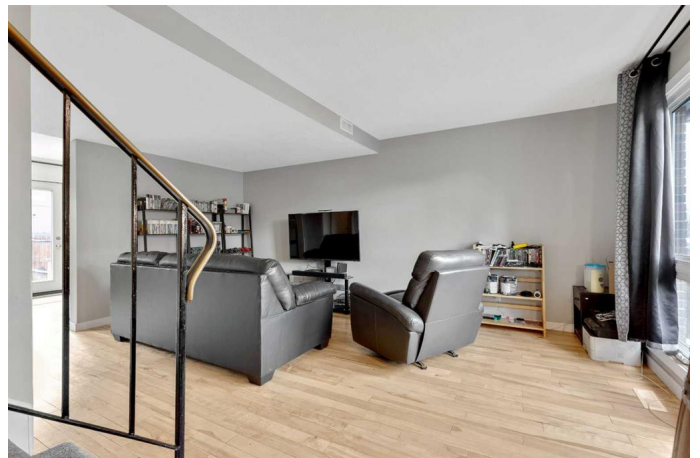
Built in 1976

Essential Information

MLS® #	A2221836
Price	\$344,000
Bedrooms	3
Bathrooms	2.00
Full Baths	1
Half Baths	1
Square Footage	1,136
Acres	0.01
Year Built	1976
Type	Residential
Sub-Type	Row/Townhouse
Style	Side by Side, Townhouse
Status	Active

Community Information

Address	14 Cataract Road Sw
Subdivision	McLaughlin Meadows



City	High River
County	Foothills County
Province	Alberta
Postal Code	T1V 1C4

Amenities

Amenities	None
Parking Spaces	1
Parking	Assigned, See Remarks, Stall, Side By Side

Interior

Interior Features	See Remarks
Appliances	Dishwasher, Range Hood, See Remarks, Washer/Dryer, Convection Oven, Range
Heating	Forced Air, Natural Gas
Cooling	None
Fireplaces	None
# of Stories	2
Has Basement	Yes
Basement	Full, Unfinished

Exterior

Exterior Features	Private Yard, Rain Gutters
Lot Description	Back Yard, Dog Run Fenced In
Roof	Asphalt Shingle
Construction	Mixed, See Remarks, Wood Siding
Foundation	Poured Concrete

Additional Information

Date Listed	May 24th, 2025
Days on Market	8
Zoning	Residential

Listing Details

Listing Office	Century 21 Foothills Real Estate
----------------	----------------------------------

Data is supplied by Pillar 9â„¢ MLS® System. Pillar 9â„¢ is the owner of the copyright in its MLS® System. Data is deemed reliable but is not guaranteed accurate by Pillar 9â„¢. The trademarks MLS®, Multiple Listing Service® and the associated logos are owned by The Canadian Real Estate Association (CREA) and identify the quality of services provided by real estate professionals who are members of CREA. Used under license.