

# \$239,900 - 1, 899 Mt Sundance Manor W, Lethbridge

MLS® #A2219275

**\$239,900**

2 Bedroom, 1.00 Bathroom, 856 sqft

Residential on 0.00 Acres

Sunridge, Lethbridge, Alberta

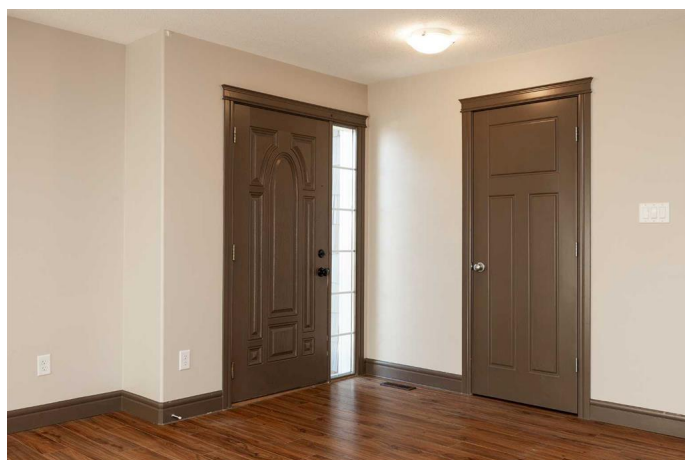
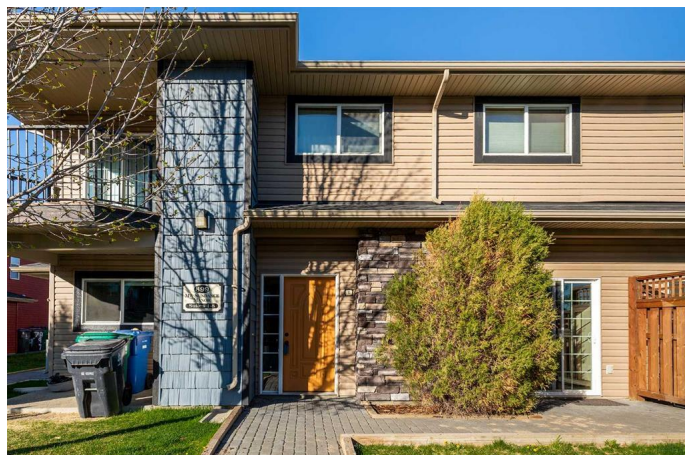
Located in Lethbridge's Sunridge, this well-maintained condo offers comfortable living with great amenities. The kitchen features stainless steel appliances, an island, and solid-surface countertops. The living area is open to the kitchen and filled with natural light. Two bedrooms and a four-piece bathroom are also included. All exterior maintenance, including snow removal and lawn care, is taken care of, making this property perfect for students, investors, or first-time buyers. An additional single-car garage can be purchased for an additional \$20,000.

Built in 2009

## Essential Information

MLS® #	A2219275
Price	\$239,900
Bedrooms	2
Bathrooms	1.00
Full Baths	1
Square Footage	856
Acres	0.00
Year Built	2009
Type	Residential
Sub-Type	Apartment
Style	Single Level Unit
Status	Active

## Community Information



Address	1, 899 Mt Sundance Manor W
Subdivision	Sunridge
City	Lethbridge
County	Lethbridge
Province	Alberta
Postal Code	T1J 5T6

### **Amenities**

Amenities	Parking
Parking Spaces	1
Parking	Off Street

### **Interior**

Interior Features	Ceiling Fan(s), Kitchen Island, Open Floorplan, Vinyl Windows
Appliances	Dishwasher, Dryer, Microwave Hood Fan, Refrigerator, Stove(s), Washer
Heating	Forced Air
Cooling	None
# of Stories	2

### **Exterior**

Exterior Features	Storage
Construction	Mixed, Vinyl Siding, Wood Frame

### **Additional Information**

Date Listed	May 9th, 2025
Days on Market	35
Zoning	R-50

### **Listing Details**

Listing Office	Lethbridge Real Estate.com
----------------	----------------------------

Data is supplied by Pillar 9â„¢ MLS® System. Pillar 9â„¢ is the owner of the copyright in its MLS® System. Data is deemed reliable but is not guaranteed accurate by Pillar 9â„¢. The trademarks MLS®, Multiple Listing Service® and the associated logos are owned by The Canadian Real Estate Association (CREA) and identify the quality of services provided by real estate professionals who are members of CREA. Used under license.