

\$499,000 - 1224 Patricia Street, Jasper

MLS® #A2214308

\$499,000

0 Bedroom, 0.00 Bathroom,
Land on 0.13 Acres

Jasper, Jasper, Alberta

This is an ideal lot to build your dream home on! Certificate of completion required to close the demolition permit to allow for Parks consent to transfer of Parks land lease. Great location backed onto Cabin Creek with gorgeous mountain views.

Essential Information

| | |
|-----------|------------------|
| MLS® # | A2214308 |
| Price | \$499,000 |
| Bathrooms | 0.00 |
| Acres | 0.13 |
| Type | Land |
| Sub-Type | Residential Land |
| Status | Active |

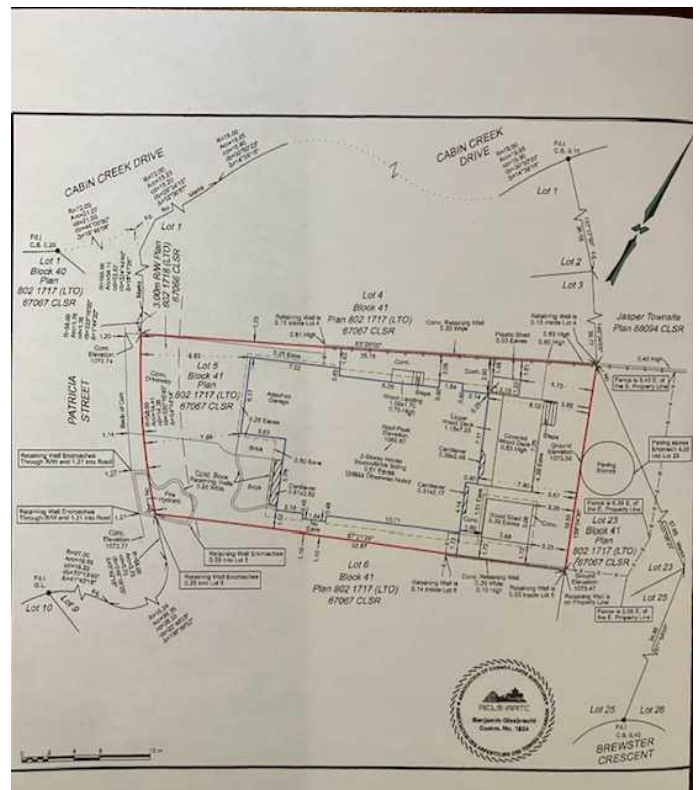
Community Information

| | |
|-------------|----------------------|
| Address | 1224 Patricia Street |
| Subdivision | Jasper |
| City | Jasper |
| County | Jasper, Municipality |
| Province | Alberta |
| Postal Code | T0E 1E0 |

Additional Information

| | |
|----------------|------------------|
| Date Listed | April 21st, 2025 |
| Days on Market | 6 |
| Zoning | R1 |

Listing Details



Listing Office

ROYAL LEPAGE SUMMITVIEW REALTY

Data is supplied by Pillar 9â„¢ MLSÂ® System. Pillar 9â„¢ is the owner of the copyright in its MLSÂ® System. Data is deemed reliable but is not guaranteed accurate by Pillar 9â„¢. The trademarks MLSÂ®, Multiple Listing ServiceÂ® and the associated logos are owned by The Canadian Real Estate Association (CREA) and identify the quality of services provided by real estate professionals who are members of CREA. Used under license.