

\$609,900 - 193 Chelsea Drive Se, Chestermere

MLS® #A2213694

\$609,900

5 Bedroom, 4.00 Bathroom, 1,540 sqft
Residential on 0.07 Acres

Chelsea_CH, Chestermere, Alberta

Stunning Semi-Detached Home with Finished Basement - Perfect for Investors or First-Time Buyers!

This 2021-built semi-detached home offers 5 spacious bedrooms and 3.5 baths, totaling 1539 SQFT of living space plus an additional 660 SQFT finished basement. Located on a traditional lot, it's an ideal space for those looking for modern amenities and future growth potential.

Main Floor:

Open-concept design featuring a combination of ceramic tiles, luxury vinyl plank (LVP), and carpeted stairs.

Upgraded kitchen with sleek quartz countertops, gas stove, and high-end appliances.

Spacious living and dining areas perfect for entertaining.

Upper Level:

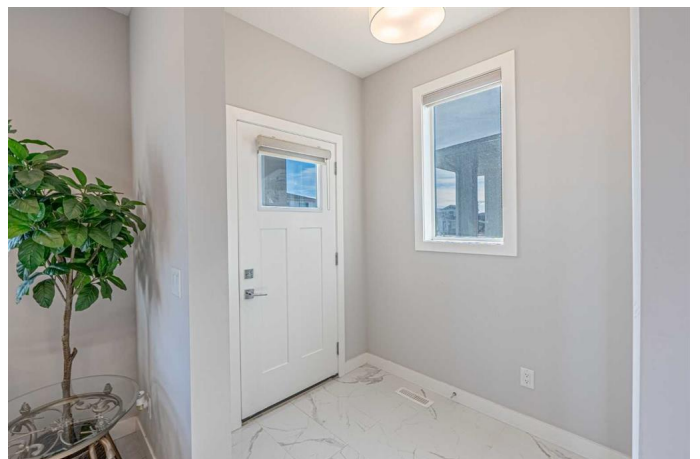
3 bedrooms and 2.5 baths, including a master suite with a luxurious 5-piece ensuite, walk-in closet, and a 3-piece bath for the two additional bedrooms.

Lower Level:

Finished basement with a separate entrance. Features 2 additional bedrooms, a cozy living area, and an upgraded full bathroom.

Future potential with rough-ins for a kitchen - ideal for a separate living space or rental opportunity.

Exterior:



Enjoy the outdoors with a concrete patio and a detached garage with space for 2 vehicles.

Prime Location:

Conveniently located just a 5-7 minute drive from major amenities like Walmart, Costco, Cineplex, a variety of restaurants, and nearby banksâ€”offering the perfect balance of modern living and easy access to all the essentials.

This home offers a versatile living space with great rental potential or ample room for a growing family. With its ideal location and modern upgrades, itâ€™s a must-see for anyone looking to invest or settle into a well-equipped, accessible property.

Built in 2021

Essential Information

MLS® #	A2213694
Price	\$609,900
Bedrooms	5
Bathrooms	4.00
Full Baths	3
Half Baths	1
Square Footage	1,540
Acres	0.07
Year Built	2021
Type	Residential
Sub-Type	Semi Detached
Style	2 Storey, Side by Side
Status	Active

Community Information

Address	193 Chelsea Drive Se
Subdivision	Chelsea_CH
City	Chestermere
County	Chestermere
Province	Alberta
Postal Code	T1X 1Z2

Amenities

Parking Spaces	2
Parking	Double Garage Detached, Garage Door Opener, Secured
# of Garages	2

Interior

Interior Features	Built-in Features, Kitchen Island, Pantry, Quartz Counters, Separate Entrance, Storage, Walk-In Closet(s)
Appliances	Dishwasher, Garage Control(s), Microwave, Refrigerator, Washer/Dryer, Window Coverings, Gas Stove
Heating	Forced Air, Natural Gas
Cooling	None
Has Basement	Yes
Basement	Exterior Entry, Finished, Full

Exterior

Exterior Features	Private Entrance
Lot Description	Back Lane, Landscaped, Rectangular Lot
Roof	Asphalt Shingle
Construction	Concrete, Vinyl Siding, Wood Frame
Foundation	Poured Concrete

Additional Information

Date Listed	April 22nd, 2025
Days on Market	2
Zoning	R3

Listing Details

Listing Office	eXp Realty
----------------	------------

Data is supplied by Pillar 9â„¢ MLSÂ® System. Pillar 9â„¢ is the owner of the copyright in its MLSÂ® System. Data is deemed reliable but is not guaranteed accurate by Pillar 9â„¢. The trademarks MLSÂ®, Multiple Listing ServiceÂ® and the associated logos are owned by The Canadian Real Estate Association (CREA) and identify the quality of services provided by real estate professionals who are members of CREA. Used under license.