

\$370,000 - 259 Sprague Way Se, Medicine Hat

MLS® #A2209264

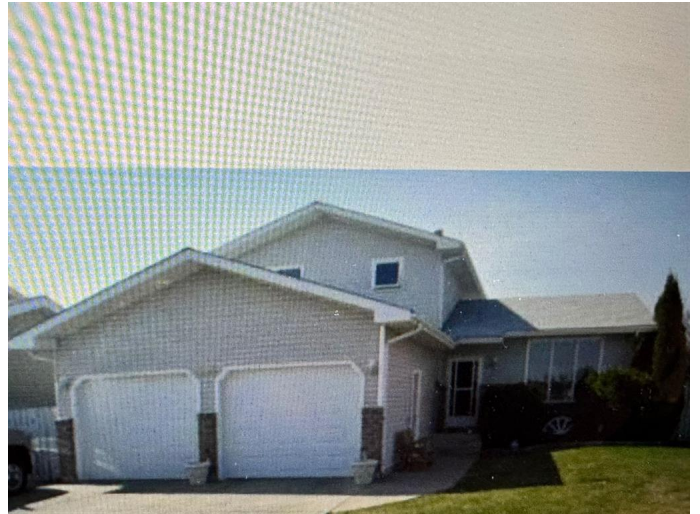
\$370,000

5 Bedroom, 3.00 Bathroom, 1,776 sqft
Residential on 0.14 Acres

SE Southridge, Medicine Hat, Alberta

Court ordered sale. Everything is "as is"

Built in 1989



Essential Information

MLS® #	A2209264
Price	\$370,000
Bedrooms	5
Bathrooms	3.00
Full Baths	3
Square Footage	1,776
Acres	0.14
Year Built	1989
Type	Residential
Sub-Type	Detached
Style	1 and Half Storey
Status	Active

Community Information

Address	259 Sprague Way Se
Subdivision	SE Southridge
City	Medicine Hat
County	Medicine Hat
Province	Alberta
Postal Code	T1B 3L9

Amenities

Parking Spaces	4
Parking	Double Garage Detached

# of Garages	2
--------------	---

Interior

Interior Features	See Remarks
Appliances	See Remarks
Heating	Forced Air
Cooling	Central Air
Has Basement	Yes
Basement	Full, Partially Finished

Exterior

Exterior Features	None
Lot Description	Back Lane, Back Yard
Roof	Asphalt Shingle
Construction	Brick, Stucco, Vinyl Siding, Wood Frame
Foundation	Poured Concrete

Additional Information

Date Listed	April 15th, 2025
Days on Market	43
Zoning	R-LD

Listing Details

Listing Office	RIVER STREET REAL ESTATE
----------------	--------------------------

Data is supplied by Pillar 9â„¢ MLS® System. Pillar 9â„¢ is the owner of the copyright in its MLS® System. Data is deemed reliable but is not guaranteed accurate by Pillar 9â„¢. The trademarks MLS®, Multiple Listing Service® and the associated logos are owned by The Canadian Real Estate Association (CREA) and identify the quality of services provided by real estate professionals who are members of CREA. Used under license.