

\$707,000 - 13 Calder Green Se, Medicine Hat

MLS® #A2208826

\$707,000

7 Bedroom, 5.00 Bathroom, 3,500 sqft
Residential on 0.17 Acres

Southview-Park Meadows, Medicine Hat,
Alberta

Massive Family Home with Endless Space,
Luxury, and Unmatched Parking

Welcome to this extraordinary 3,500 sq. ft.
above-grade home, a rare gem offering
unparalleled space, comfort, and versatility.
Located in a quiet cul-de-sac and backing onto
a peaceful green space, this property is
perfect for large families, multi-generational
living, or those seeking additional income
potential.

Key Features:

Grand Living Spaces: Two expansive living
rooms, ideal for entertaining or relaxing.

Entertainer's Dining Area: A dining space
large enough to comfortably seat 24 + guests.

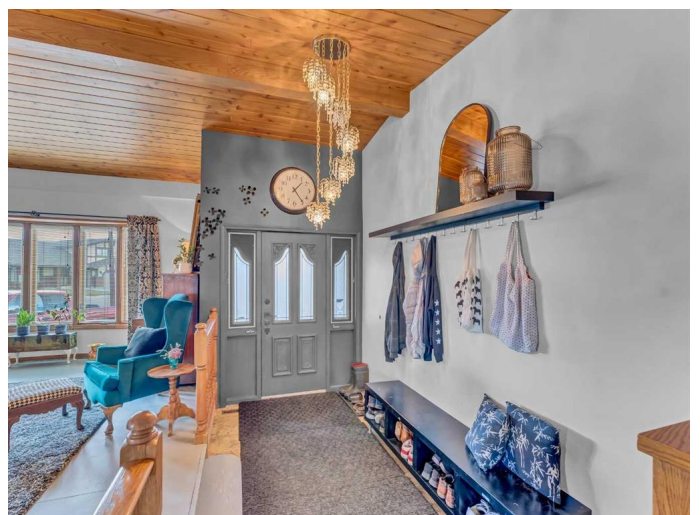
Chef's Kitchen: Spacious and functional,
perfect for hosting gatherings and culinary
adventures.

7 Bedrooms + Bonus Room: Three oversized
bedrooms upstairs, including a master suite
with a private balcony and a spa-like ensuite
featuring a deep soaker tub. An additional
bedroom on the main floor could serve as a
home office.

4 Full Bathrooms + 1 Half Bath: Convenience
throughout, including a half bath located off
the attached garage.

2 Laundry Rooms: One within the main home
and a second dedicated to the separate suite.

Lower-Level Retreat: A cozy family room or
large bedroom complete with a sunken round
hot tub and a private sauna room for ultimate
relaxation.



Separate 2-Bedroom Suite: Perfect for a mother-in-law suite or as an income-generating rental.

Outdoor & Parking Perks:

Parking for 9 Vehicles: Plenty of room for family cars, an RV, bus, or even a semi-truck.

Attached Double Garage: Additional convenience and storage.

This home truly stands out with its massive size, thoughtful design, and luxurious features.

Whether you're hosting large gatherings, accommodating extended family, or simply enjoying the serene green space views, this property has it all.

Don't miss your chance to own this one-of-a-kind home—schedule your private showing today!

Built in 1982

Essential Information

MLS® #	A2208826
Price	\$707,000
Bedrooms	7
Bathrooms	5.00
Full Baths	4
Half Baths	1
Square Footage	3,500
Acres	0.17
Year Built	1982
Type	Residential
Sub-Type	Detached
Style	2 and Half Storey
Status	Active

Community Information

Address	13 Calder Green Se
Subdivision	Southview-Park Meadows
City	Medicine Hat
County	Medicine Hat

Province Alberta
Postal Code T1B 3K6

Amenities

Parking Spaces 9
Parking Double Garage Attached, Garage Door Opener, Garage Faces Front, Additional Parking, Driveway, Multiple Driveways
of Garages 2

Interior

Interior Features See Remarks
Appliances Built-In Oven, Central Air Conditioner, Dishwasher, Dryer, Garage Control(s), Range Hood, Refrigerator, Stove(s), Washer/Dryer
Heating Forced Air
Cooling Central Air
Fireplace Yes
of Fireplaces 1
Fireplaces Wood Burning
Has Basement Yes
Basement Finished, Full, Exterior Entry, Suite, Walk-Up To Grade

Exterior

Exterior Features Private Yard
Lot Description Cul-De-Sac, Irregular Lot, Backs on to Park/Green Space
Roof Asphalt Shingle
Construction Vinyl Siding, Aluminum Siding, Brick, Metal Siding
Foundation Poured Concrete

Additional Information

Date Listed April 18th, 2025
Days on Market 6
Zoning R-LD

Listing Details

Listing Office CIR REALTY

Data is supplied by Pillar 9â„¢ MLSÂ® System. Pillar 9â„¢ is the owner of the copyright in its MLSÂ® System. Data is deemed reliable but is not guaranteed accurate by Pillar 9â„¢. The trademarks MLSÂ®, Multiple Listing ServiceÂ® and the associated logos are owned by The Canadian Real Estate Association (CREA) and identify the quality of services provided by real estate professionals who are members of CREA. Used under license.