

\$228,000 - 2211, 2600 66 Street Ne, Calgary

MLS® #A2207909

\$228,000

2 Bedroom, 2.00 Bathroom, 836 sqft
Residential on 0.00 Acres

Pineridge, Calgary, Alberta

Great Investment Opportunity in Pineridge!

This spacious 2-bedroom, 2-bathroom condo offers an excellent layout with the bedrooms located on opposite sides of the unit for added privacy. The primary bedroom features its own ensuite bathroom and a walk-through closet.

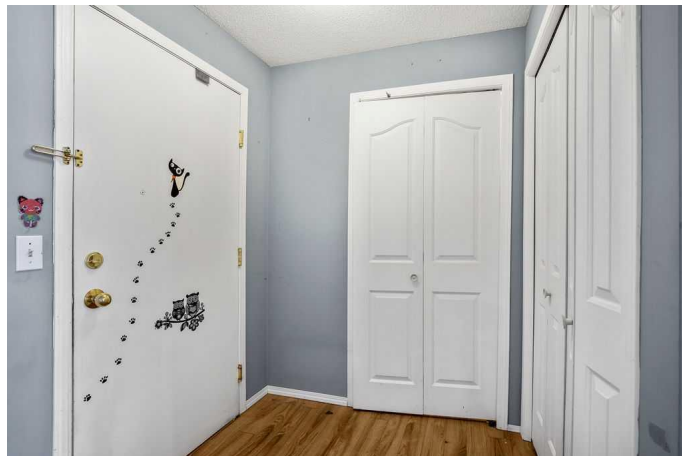
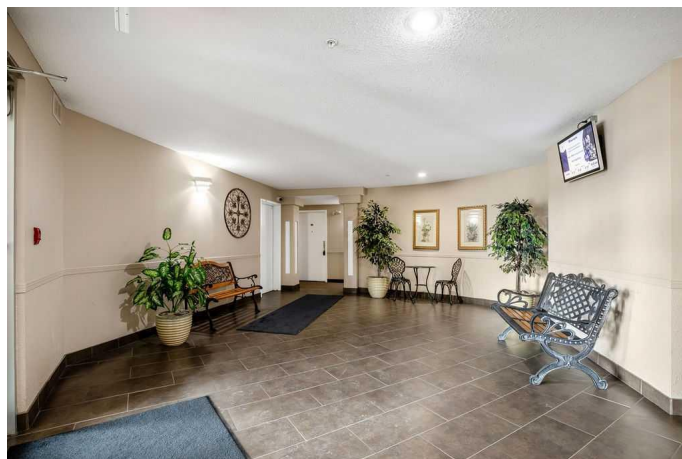
Enjoy the open-concept living and dining areas, perfect for entertaining. A west-facing balcony brings in plenty of natural light and offers a great space to relax. Conveniently located near shopping, schools, public transit, and major routes, this condo is ideal for those seeking both comfort and convenience.

Don't miss out on this fantastic opportunity!

Built in 2001

Essential Information

MLS® #	A2207909
Price	\$228,000
Bedrooms	2
Bathrooms	2.00
Full Baths	2
Square Footage	836
Acres	0.00
Year Built	2001
Type	Residential
Sub-Type	Apartment
Style	Single Level Unit
Status	Active



Community Information

Address	2211, 2600 66 Street Ne
Subdivision	Pineridge
City	Calgary
County	Calgary
Province	Alberta
Postal Code	T1Y 6M7

Amenities

Amenities	Elevator(s), Visitor Parking
Parking Spaces	2
Parking	Stall

Interior

Interior Features	See Remarks
Appliances	None
Heating	Baseboard, Natural Gas
Cooling	None
# of Stories	3

Exterior

Exterior Features	Balcony
Construction	Stone, Vinyl Siding, Wood Frame

Additional Information

Date Listed	April 2nd, 2025
Days on Market	3
Zoning	M-C1

Listing Details

Listing Office	RE/MAX House of Real Estate
----------------	-----------------------------

Data is supplied by Pillar 9â„¢ MLSÂ® System. Pillar 9â„¢ is the owner of the copyright in its MLSÂ® System. Data is deemed reliable but is not guaranteed accurate by Pillar 9â„¢. The trademarks MLSÂ®, Multiple Listing ServiceÂ® and the associated logos are owned by The Canadian Real Estate Association (CREA) and identify the quality of services provided by real estate professionals who are members of CREA. Used under license.