

# \$499,000 - 404, 131 Quarry Way Se, Calgary

MLS® #A2204886

**\$499,000**

1 Bedroom, 1.00 Bathroom, 860 sqft  
Residential on 0.00 Acres

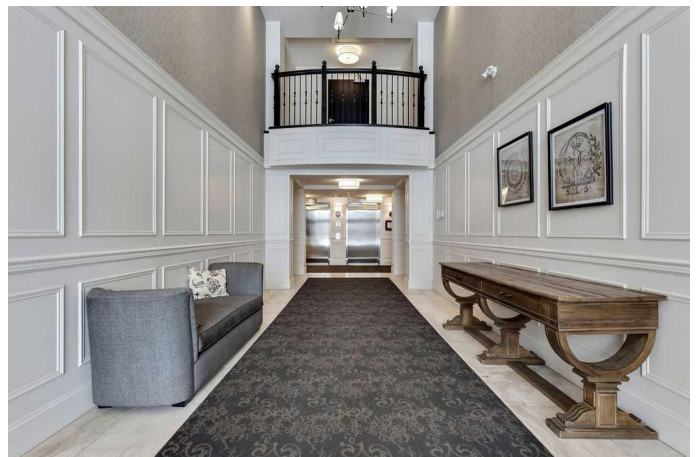
Douglasdale/Glen, Calgary, Alberta

Experience luxury condo living this beautiful and immaculate 1-bedroom, 1-bathroom residence in this exquisite Champagne development. Located on the 4th floor of this quiet complex, this home delivers a penthouse quality with no overhead balcony, allowing natural light to flood the space. The interior is rich with quality and taste featuring tray ceilings, engineered hardwood flooring, 9 ft ceilings, marble tile, and top of the line finishings. The chef's kitchen is centrally located within the unit, outfitted with premium stainless-steel appliances including a gas range, an oversized granite island, soft-close cabinetry, making it perfect for entertaining or everyday casual dining. The bedroom can easily accommodate a king size bed and more. The spa-like ensuite bathroom invites relaxation offers a soaker tub as well as a tile shower. Enjoy the convenience of a titled underground parking stall, titled storage unit, bicycle storage, and a car wash bay. The unbeatable location has you walking out of your building just steps from the Bow River Pathway system, quick access to Deerfoot Trail, and walking distance to shops, restaurants, YMCA and more.

Built in 2013

## Essential Information

|        |           |
|--------|-----------|
| MLS® # | A2204886  |
| Price  | \$499,000 |



|                |                   |
|----------------|-------------------|
| Bedrooms       | 1                 |
| Bathrooms      | 1.00              |
| Full Baths     | 1                 |
| Square Footage | 860               |
| Acres          | 0.00              |
| Year Built     | 2013              |
| Type           | Residential       |
| Sub-Type       | Apartment         |
| Style          | Single Level Unit |
| Status         | Active            |

### **Community Information**

|             |                        |
|-------------|------------------------|
| Address     | 404, 131 Quarry Way Se |
| Subdivision | Douglasdale/Glen       |
| City        | Calgary                |
| County      | Calgary                |
| Province    | Alberta                |
| Postal Code | T2C 5L7                |

### **Amenities**

|                |                                |
|----------------|--------------------------------|
| Amenities      | Elevator(s), Storage, Car Wash |
| Parking Spaces | 1                              |
| Parking        | Underground                    |

### **Interior**

|                   |   |
|-------------------|---|
| Interior Features | Kitchen Island, No Animal Home, No Smoking Home                                 |
| Appliances        | Dishwasher, Dryer, Gas Stove, Microwave, Refrigerator, Washer, Window Coverings |
| Heating           | Fan Coil  |
| Cooling           | Central Air   |
| # of Stories      | 5   |

### **Exterior**

|                   |                         |
|-------------------|-------------------------|
| Exterior Features | None                    |
| Construction      | Concrete, Stone, Stucco |

### **Additional Information**

|                |                 |
|----------------|-----------------|
| Date Listed    | April 1st, 2025 |
| Days on Market | 22              |

|                |     |
|----------------|-----|
| Zoning         | DC  |
| HOA Fees       | 26  |
| HOA Fees Freq. | MON |

### **Listing Details**

|                |              |
|----------------|--------------|
| Listing Office | RE/MAX First |
|----------------|--------------|

Data is supplied by Pillar 9â,,ç MLSÂ® System. Pillar 9â,,ç is the owner of the copyright in its MLSÂ® System. Data is deemed reliable but is not guaranteed accurate by Pillar 9â,,ç. The trademarks MLSÂ®, Multiple Listing ServiceÂ® and the associated logos are owned by The Canadian Real Estate Association (CREA) and identify the quality of services provided by real estate professionals who are members of CREA. Used under license.