

\$399,900 - 1280 Redcliff Drive Sw, Medicine Hat

MLS® #A2204272

\$399,900

0 Bedroom, 0.00 Bathroom,
Land on 0.86 Acres

SW Hill, Medicine Hat, Alberta

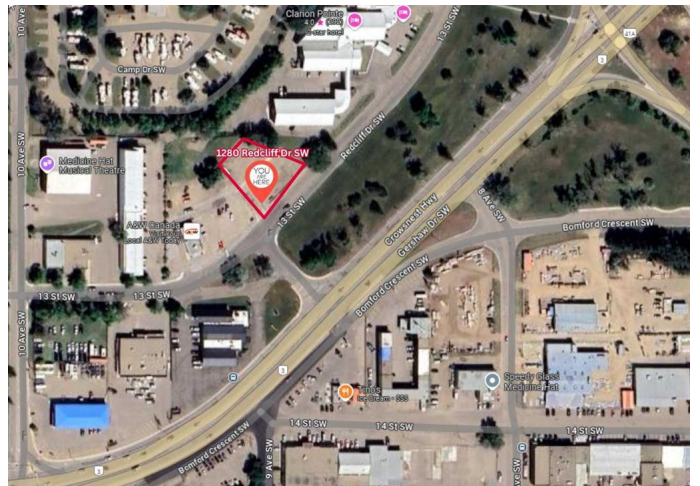
This 0.86-acre parcel offers exceptional visibility and endless potential in a high-traffic location just off Highway #3. Ideally situated along one of the main routes to Echo Dale, Golden Sheaf, and Forty Mile parks, this property is perfectly positioned to capture attention. Surrounded by well established motels and restaurants, this is well suited for a wide range of commercial ventures—from retail and food services to recreational or service-based businesses. Don't miss this chance to secure a prime piece of commercial real estate in a great location.

Essential Information

MLS® #	A2204272
Price	\$399,900
Bathrooms	0.00
Acres	0.86
Type	Land
Sub-Type	Commercial Land
Status	Active

Community Information

Address	1280 Redcliff Drive Sw
Subdivision	SW Hill
City	Medicine Hat
County	Medicine Hat
Province	Alberta
Postal Code	T1A 5E5



Exterior

Lot Description Irregular Lot

Additional Information

Date Listed March 21st, 2025
Days on Market 35
Zoning C-H

Listing Details

Listing Office ROYAL LEPAGE COMMUNITY REALTY

Data is supplied by Pillar 9â„¢ MLS® System. Pillar 9â„¢ is the owner of the copyright in its MLS® System. Data is deemed reliable but is not guaranteed accurate by Pillar 9â„¢. The trademarks MLS®, Multiple Listing Service® and the associated logos are owned by The Canadian Real Estate Association (CREA) and identify the quality of services provided by real estate professionals who are members of CREA. Used under license.