

\$629,900 - 774 Violet Place W, Lethbridge

MLS® #A2201399

\$629,900

3 Bedroom, 3.00 Bathroom, 2,013 sqft

Residential on 0.13 Acres

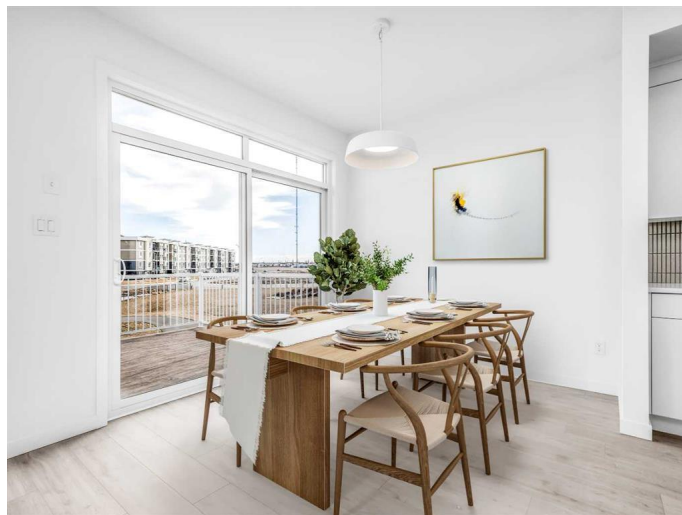
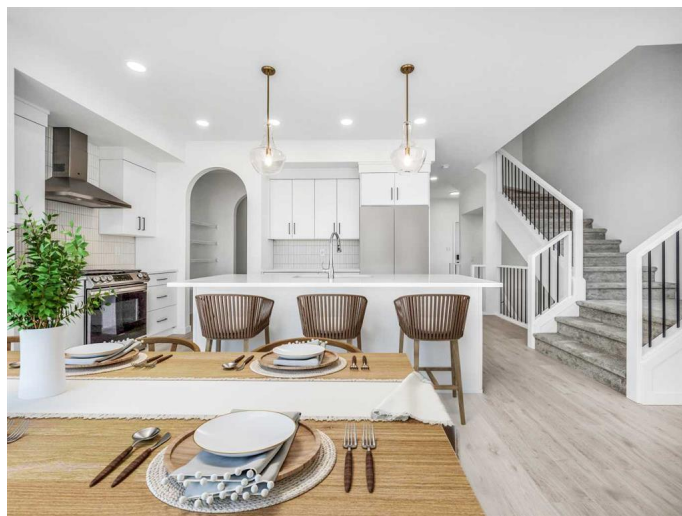
Country Meadows Estates, Lethbridge, Alberta

The "Rowan", functional floor plan with large mudroom and walk through pantry off the over-sized garage. Cul de sac location for this large pie-shaped Lot. Tall ceilings and lots of glass throughout the main floor for that extra natural light. Modern light fixtures, kohler plumbing fixtures, quartz counter tops. Open staircase leads you to a large primary bedroom . You will enjoy the 5 piece ensuite with dual sinks, and separate tub and shower. Lots of room for those clothes in the walk in closet as well. The bonus room separates the primary bedroom from the 2 kids bedrooms, great for privacy. There is also the convenience of an actual Laundry room upstairs as well. Basement is undeveloped but set up for family room, bedroom and another full Bathroom. Country Meadows is a smaller community with easy access to down town core, close to twin rinks and pool, schools and shopping. Play ground only a short walk away. New home warranty. Home is virtually staged.

Built in 2024

Essential Information

MLS® #	A2201399
Price	\$629,900
Bedrooms	3
Bathrooms	3.00
Full Baths	2
Half Baths	1



Square Footage	2,013
Acres	0.13
Year Built	2024
Type	Residential
Sub-Type	Detached
Style	2 Storey
Status	Active

Community Information

Address	774 Violet Place W
Subdivision	Country Meadows Estates
City	Lethbridge
County	Lethbridge
Province	Alberta
Postal Code	T1J5V1

Amenities

Parking Spaces	4
Parking	Double Garage Attached
# of Garages	2

Interior

Interior Features	Kitchen Island, Pantry, Quartz Counters, Walk-In Closet(s)
Appliances	Dishwasher, Gas Range, Microwave, Refrigerator, Range Hood
Heating	Forced Air
Cooling	None
Fireplace	Yes
# of Fireplaces	1
Fireplaces	Gas, Living Room
Has Basement	Yes
Basement	Full, Unfinished

Exterior

Exterior Features	None
Lot Description	Back Lane
Roof	Asphalt Shingle
Construction	Concrete, Vinyl Siding, Wood Frame
Foundation	Poured Concrete

Additional Information

Date Listed	March 12th, 2025
Days on Market	185
Zoning	RCL

Listing Details

Listing Office	RE/MAX REAL ESTATE - LETHBRIDGE
----------------	---------------------------------

Data is supplied by Pillar 9â„¢ MLS® System. Pillar 9â„¢ is the owner of the copyright in its MLS® System. Data is deemed reliable but is not guaranteed accurate by Pillar 9â„¢. The trademarks MLS®, Multiple Listing Service® and the associated logos are owned by The Canadian Real Estate Association (CREA) and identify the quality of services provided by real estate professionals who are members of CREA. Used under license.