

\$95,000 - 202, 4820 47 Avenue, Red Deer

MLS® #A2201372

\$95,000

1 Bedroom, 1.00 Bathroom, 489 sqft
Residential on 0.01 Acres

Downtown Red Deer, Red Deer, Alberta

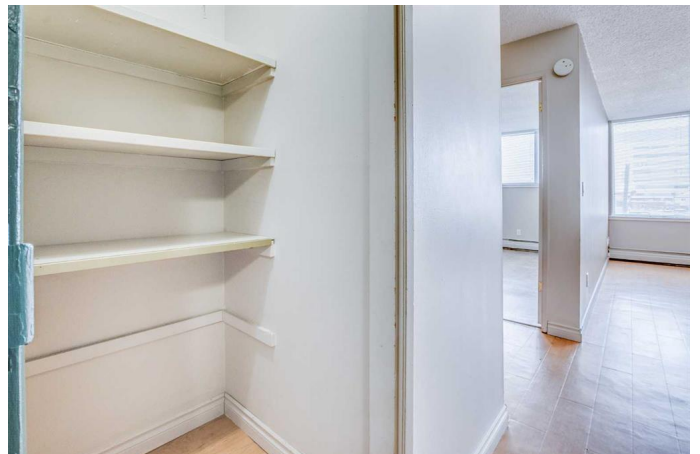
Lexington place! Affordable living close to downtown, walking distance to transit, medical services, Red Deer hospital, Coronation park and retail shopping centres.

Cozy 1 bedroom 1 full bathroom apartment. Good sized front entryway, large west facing living room with laminate flooring & lots of natural light. Spacious bedroom with ample closet space. Galley style kitchen with white appliances. Located on the second floor. Fresh paint. Laundry room is conveniently located on the same floor. ALL UTILITIES ARE INCLUDED IN THE CONDO FEES (\$383/mo). Perfect for a first time homebuyer or investment property.

Built in 1977

Essential Information

MLS® #	A2201372
Price	\$95,000
Bedrooms	1
Bathrooms	1.00
Full Baths	1
Square Footage	489
Acres	0.01
Year Built	1977
Type	Residential
Sub-Type	Apartment
Style	Single Level Unit
Status	Active



Community Information

Address	202, 4820 47 Avenue
Subdivision	Downtown Red Deer
City	Red Deer
County	Red Deer
Province	Alberta
Postal Code	T4N 6B9

Amenities

Amenities	Parking, Laundry
Parking Spaces	1
Parking	Off Street, Common

Interior

Interior Features	Storage
Appliances	Refrigerator, Stove(s), Window Coverings
Heating	Baseboard, Hot Water, Natural Gas
Cooling	None
# of Stories	6

Exterior

Exterior Features	None
Roof	Flat
Construction	Brick, Stucco

Additional Information

Date Listed	March 10th, 2025
Days on Market	1
Zoning	C1

Listing Details

Listing Office	Century 21 Maximum
----------------	--------------------

Data is supplied by Pillar 9â„¢ MLSÂ® System. Pillar 9â„¢ is the owner of the copyright in its MLSÂ® System. Data is deemed reliable but is not guaranteed accurate by Pillar 9â„¢. The trademarks MLSÂ®, Multiple Listing ServiceÂ® and the associated logos are owned by The Canadian Real Estate Association (CREA) and identify the quality of services provided by real estate professionals who are members of CREA. Used under license.