

\$240,000 - 412 1 Street E, Barnwell

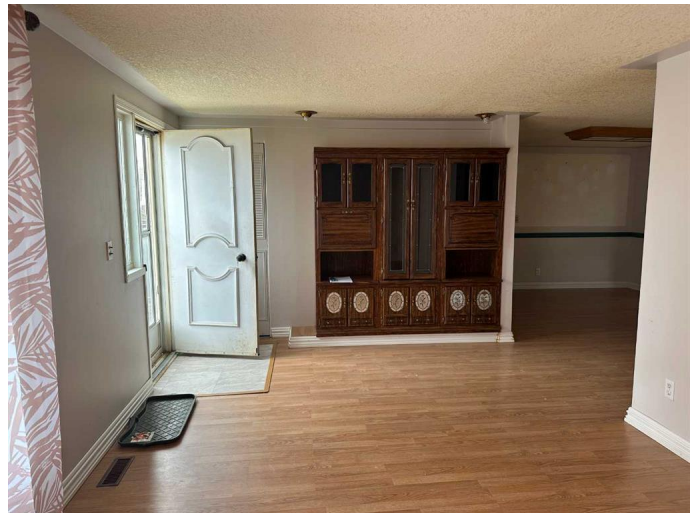
MLS® #A2200808

\$240,000

4 Bedroom, 2.00 Bathroom, 1,648 sqft
Residential on 0.24 Acres

NONE, Barnwell, Alberta

This raised bungalow offers over 1,600 sq ft with 3 bedrooms on the main floor, 2 bathrooms (one being the en-suite), a large kitchen area, expansive living room with front window for plenty of daylight and a dining space for the family. The basement development has been started and awaits completion for a massive family room, 4th bedroom and plenty of storage spaces. Laundry is on the main floor for convenience and the large yard is fenced for kids and pets. Just around the corner is the K-9 school and there's a post office and small grocery store in town as well. Plus it's only a few mins drive to Taber or west to Lethbridge if you wish. Plan to visit!



Essential Information

MLS® #	A2200808
Price	\$240,000
Bedrooms	4
Bathrooms	2.00
Full Baths	2
Square Footage	1,648
Acres	0.24
Type	Residential
Sub-Type	Detached
Style	Modular Home
Status	Active

Community Information

Address	412 1 Street E
Subdivision	NONE
City	Barnwell
County	Taber, M.D. of
Province	Alberta
Postal Code	T0K 0B0

Amenities

Parking Spaces	3
Parking	Off Street

Interior

Interior Features	See Remarks
Appliances	See Remarks
Heating	Forced Air
Cooling	None
Has Basement	Yes
Basement	Full, Partially Finished

Exterior

Exterior Features	Other
Lot Description	See Remarks
Roof	Asphalt Shingle
Construction	Vinyl Siding
Foundation	Poured Concrete

Additional Information

Date Listed	March 10th, 2025
Days on Market	1
Zoning	Res

Listing Details

Listing Office	RE/MAX REAL ESTATE - LETHBRIDGE (TABER)
----------------	---

Data is supplied by Pillar 9â„¢ MLSÂ® System. Pillar 9â„¢ is the owner of the copyright in its MLSÂ® System. Data is deemed reliable but is not guaranteed accurate by Pillar 9â„¢. The trademarks MLSÂ®, Multiple Listing ServiceÂ® and the associated logos are owned by The Canadian Real Estate Association (CREA) and identify the quality of services provided by real estate professionals who are members of CREA. Used under license.