

\$365,000 - 242023 2 Highway, Rural Peace No. 135, M.D. of

MLS® #A2200800

\$365,000

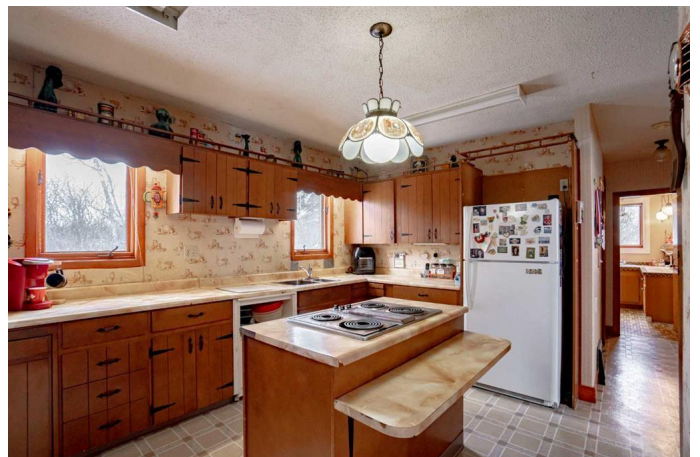
4 Bedroom, 3.00 Bathroom, 2,177 sqft
Residential on 10.60 Acres

NONE, Rural Peace No. 135, M.D. of, Alberta

Welcome to this spacious 10.60 acre property located just south of Grimshaw. Part of the house was built in 1958, while the other part, along with a second basement, was added in 1978. The home boasts four oversized bedrooms, a large living room with a wood-burning fireplace, and a kitchen with ample cupboard space. The kitchen has a built-in oven as well as a stove top on the island, and dishwasher hookups. There are a total of three bathrooms, one of which includes double sinks and a sauna. The attached single car garage is heated and provides convenient access to the home. Outside, you'll find a large garden area to the east and several outbuildings to the south. These include a 24x30 heated 2-car garage with 220 power, a 52x63 Quonset with a concrete floor, and a well-maintained 30x30 barn with power. if that's not enough there is also 35x60 shop with 220 power, concrete floors and a bathroom. Recent updates to the home include a brand new tin roof (2024) and updated hot water tanks. With some personal touches, this property has the potential to become your rural paradise. Don't miss out on this opportunity to to make this home and acreage your own.

Built in 1958

Essential Information



| | |
|----------------|---|
| MLS® # | A2200800 |
| Price | \$365,000 |
| Bedrooms | 4 |
| Bathrooms | 3.00 |
| Full Baths | 2 |
| Half Baths | 1 |
| Square Footage | 2,177 |
| Acres | 10.60 |
| Year Built | 1958 |
| Type | Residential |
| Sub-Type | Detached |
| Style | 1 and Half Storey, Acreage with Residence |
| Status | Active |

Community Information

| | |
|-------------|------------------------------|
| Address | 242023 2 Highway |
| Subdivision | NONE |
| City | Rural Peace No. 135, M.D. of |
| County | Peace No. 135, M.D. of |
| Province | Alberta |
| Postal Code | T0H 1W0 |

Amenities

| | |
|--------------|--|
| Parking | Double Garage Attached, Single Garage Attached |
| # of Garages | 8 |

Interior

| | |
|-------------------|---|
| Interior Features | Built-in Features, Double Vanity, Kitchen Island, Sauna |
| Appliances | Built-In Oven, Refrigerator, Washer/Dryer, Built-In Range |
| Heating | Forced Air |
| Cooling | None |
| Fireplace | Yes |
| # of Fireplaces | 1 |
| Fireplaces | Wood Burning |
| Has Basement | Yes |
| Basement | Partial, Unfinished |

Exterior

| | |
|-------------------|-------------------------------|
| Exterior Features | Garden, Private Yard, Storage |
|-------------------|-------------------------------|

| | |
|-----------------|--|
| Lot Description | Garden, Landscaped, Lawn, Level, Private |
| Roof | Metal |
| Construction | Aluminum Siding |
| Foundation | Poured Concrete |

Additional Information

| | |
|----------------|------------------|
| Date Listed | March 10th, 2025 |
| Days on Market | 1 |
| Zoning | AG |

Listing Details

| | |
|----------------|------------------------------|
| Listing Office | Grassroots Realty Group Ltd. |
|----------------|------------------------------|

Data is supplied by Pillar 9â„¸ MLSÂ© System. Pillar 9â„¸ is the owner of the copyright in its MLSÂ© System. Data is deemed reliable but is not guaranteed accurate by Pillar 9â„¸. The trademarks MLSÂ©, Multiple Listing ServiceÂ© and the associated logos are owned by The Canadian Real Estate Association (CREA) and identify the quality of services provided by real estate professionals who are members of CREA. Used under license.