

\$219,900 - Ne-8-73-5-w6 Range Road 54, Rural Grande Prairie No. 1, County of

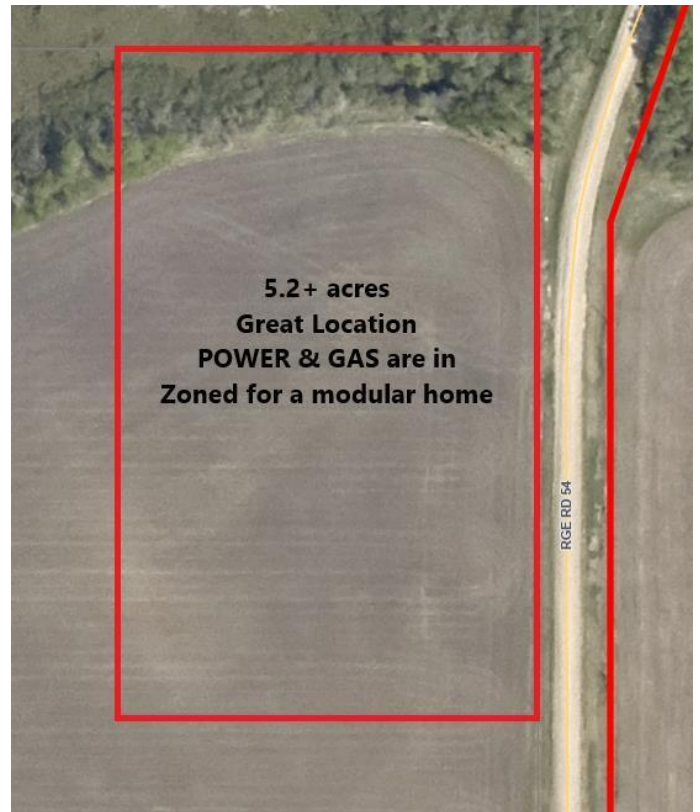
MLS® #A2199426

\$219,900

0 Bedroom, 0.00 Bathroom,
Land on 5.22 Acres

NONE, Rural Grande Prairie No. 1, County of,
Alberta

POWER and GAS are in! Property is zoned for a modular home! Beautiful 5.2 acre parcel with close proximity to Grande Prairie. It comes with nice tree coverage to the North. Mostly pavement to the property with a short stint of gravel. Great potential for a home build or a modular home set up. Seller may be willing to do a short term vendor finance while you set up your acreage.



Essential Information

MLS® #	A2199426
Price	\$219,900
Bathrooms	0.00
Acres	5.22
Type	Land
Sub-Type	Residential Land
Status	Active

Community Information

Address	Ne-8-73-5-w6 Range Road 54
Subdivision	NONE
City	Rural Grande Prairie No. 1, County of
County	Grande Prairie No. 1, County of
Province	Alberta
Postal Code	T0H 3C0

Additional Information



Date Listed	March 5th, 2025
Days on Market	121
Zoning	CR-5

Listing Details

Listing Office	Grassroots Realty Group Ltd.
----------------	------------------------------

Data is supplied by Pillar 9â„¢ MLS® System. Pillar 9â„¢ is the owner of the copyright in its MLS® System. Data is deemed reliable but is not guaranteed accurate by Pillar 9â„¢. The trademarks MLS®, Multiple Listing Service® and the associated logos are owned by The Canadian Real Estate Association (CREA) and identify the quality of services provided by real estate professionals who are members of CREA. Used under license.