

# \$289,900 - 592065 Range Road 130, Rural Woodlands County

MLS® #A2196507

**\$289,900**

3 Bedroom, 2.00 Bathroom, 1,627 sqft  
Residential on 2.99 Acres

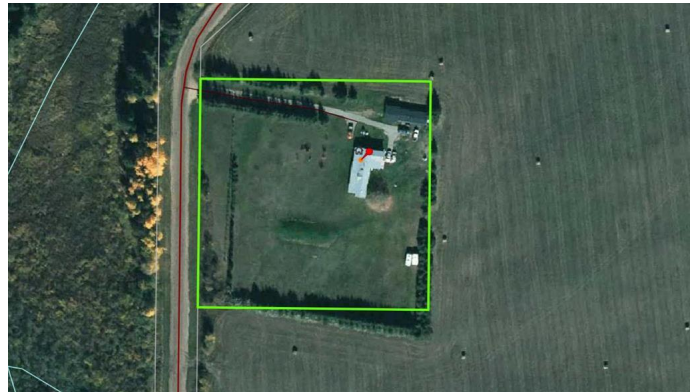
NONE, Rural Woodlands County, Alberta

"PRIVATE ACREAGE CLOSE TO TOWN- AND UNDER \$300,000 This affordable acreage close to town is very private and serene , and shows amazing !! Starting with a tree-lined driveway, this property consists of a 1994 home offering 3 bedrooms and 2 full bathrooms, 2.99 acres with a dense tree-line along the perimeter, a 22'x21' carport and a 20'x22' shed/ chicken coop. This home also has a large heated addition which could easily be a 4th bedroom/flex room. This home shows beautifully , is on a dead-end road close to the Mcleod River, with a trail to the river close by. This property was unaffected by the 2024 flooding. There is a large fenced garden , huge covered front deck and all appliances are staying with this property. Close to Eagle River Campground and close to town. Home has new siding, new insulation, new soffits and new eavestroughing.

Built in 1994

## Essential Information

MLS® #	A2196507
Price	\$289,900
Bedrooms	3
Bathrooms	2.00
Full Baths	2
Square Footage	1,627



Acres	2.99
Year Built	1994
Type	Residential
Sub-Type	Detached
Style	Acreage with Residence, Mobile
Status	Active

### Community Information

Address	592065 Range Road 130
Subdivision	NONE
City	Rural Woodlands County
County	Woodlands County
Province	Alberta
Postal Code	T7S1N4

### Amenities

Parking Spaces	8
Parking	Driveway, Carport, Gravel Driveway

### Interior

Interior Features	Built-in Features
Appliances	Dishwasher, Dryer, Range Hood, Refrigerator, Stove(s), Washer, Water Softener, Window Coverings
Heating	Forced Air, Natural Gas
Cooling	None
Basement	None

### Exterior

Exterior Features	Fire Pit, Garden
Lot Description	Back Yard, Front Yard, Garden, Landscaped, Lawn, Level, Many Trees, Private
Roof	Asphalt Shingle
Construction	Vinyl Siding
Foundation	None

### Additional Information

Date Listed	February 22nd, 2025
Days on Market	68
Zoning	A1

**Listing Details**

Listing Office                    RE/MAX ADVANTAGE (WHITECOURT)

Data is supplied by Pillar 9â„¢ MLS® System. Pillar 9â„¢ is the owner of the copyright in its MLS® System. Data is deemed reliable but is not guaranteed accurate by Pillar 9â„¢. The trademarks MLS®, Multiple Listing Service® and the associated logos are owned by The Canadian Real Estate Association (CREA) and identify the quality of services provided by real estate professionals who are members of CREA. Used under license.