

# \$4,500,000 - 240083c Range Road 270, Rural Wheatland County

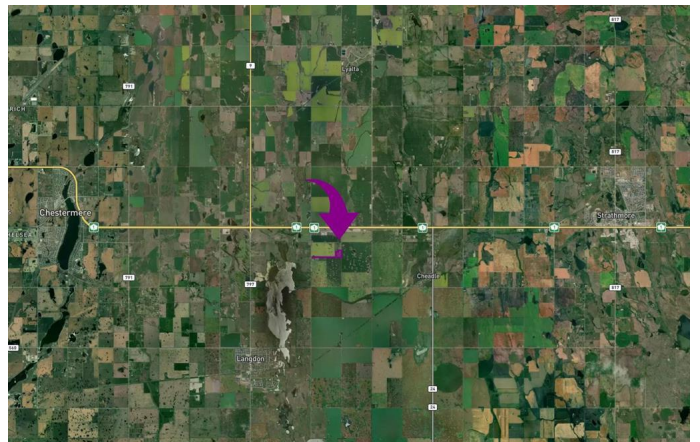
MLS® #A2196369

**\$4,500,000**

0 Bedroom, 0.00 Bathroom,  
Land on 30.00 Acres

NONE, Rural Wheatland County, Alberta

Unlock the potential of this 30-acre parcel in Wheatland County, perfectly positioned for future growth. Currently zoned as agricultural, the property is located within the West Hwy 1 Area Structure Plan, making it an exciting investment for future development. Adjacent to the recently announced De Havilland airfield and neighbouring the burgeoning Origin Business Park, this location is poised to become a hotspot for commercial and industrial activity. The property includes two on-site houses, one spanning 3,844 square feet and the other 1,527 square feet, offering ample living space or potential for office use. This is a prime opportunity to invest in an area set for major transformation!



## Essential Information

MLS® #	A2196369
Price	\$4,500,000
Bathrooms	0.00
Acres	30.00
Type	Land
Sub-Type	Industrial Land
Status	Active

## Community Information

Address	240083c Range Road 270
Subdivision	NONE

City	Rural Wheatland County
County	Wheatland County
Province	Alberta
Postal Code	T1P 0S2

### **Additional Information**

Date Listed	February 20th, 2025
Days on Market	62
Zoning	AG

### **Listing Details**

Listing Office	Terradigm Real Estate Advisors Ltd.
----------------	-------------------------------------

Data is supplied by Pillar 9â„¸ MLSÂ® System. Pillar 9â„¸ is the owner of the copyright in its MLSÂ® System. Data is deemed reliable but is not guaranteed accurate by Pillar 9â„¸. The trademarks MLSÂ®, Multiple Listing ServiceÂ® and the associated logos are owned by The Canadian Real Estate Association (CREA) and identify the quality of services provided by real estate professionals who are members of CREA. Used under license.