

\$1,960,000 - On Range Road 283, Indus

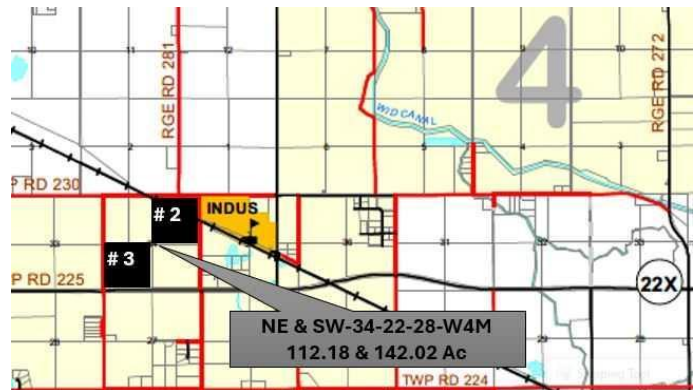
MLS® #A2195818

\$1,960,000

0 Bedroom, 0.00 Bathroom,
Land on 142.02 Acres

NONE, Indus, Alberta

Multi-Parcel Court-order sale â€œ Chestermere / Indus, Alberta â€œ only minutes from SE Calgary: 142.02 +/- Ac of farmland. There appears to be 135 +/- Ac of CLI #1 & #2 soil. The property is located approximately 2 miles West of Indus Â½ mile south on the east side of RG Rd 283. The south boundary of the property is adjacent to Hwy 22X. The property is zoned Ag General. There is a 5-Ac +/- parcel that has been previously sub-divided from the NW corner of the quarter section. At the time this listing was posted, there was minimal information available. As more information becomes available, the listing will be updated accordingly. More listing details will be available on the realtor website.



Essential Information

| | |
|-----------|-----------------|
| MLS® # | A2195818 |
| Price | \$1,960,000 |
| Bathrooms | 0.00 |
| Acres | 142.02 |
| Type | Land |
| Sub-Type | Commercial Land |
| Status | Active |

Community Information

| | |
|-------------|-------------------|
| Address | On Range Road 283 |
| Subdivision | NONE |
| City | Indus |

| | |
|-------------|-------------------|
| County | Rocky View County |
| Province | Alberta |
| Postal Code | T1X 0H7 |

Additional Information

| | |
|----------------|---------------------|
| Date Listed | February 19th, 2025 |
| Days on Market | 21 |
| Zoning | Ag |

Listing Details

| | |
|----------------|------------------------------------|
| Listing Office | RE/MAX real estate central alberta |
|----------------|------------------------------------|

Data is supplied by Pillar 9â„¢ MLSÂ® System. Pillar 9â„¢ is the owner of the copyright in its MLSÂ® System. Data is deemed reliable but is not guaranteed accurate by Pillar 9â„¢. The trademarks MLSÂ®, Multiple Listing ServiceÂ® and the associated logos are owned by The Canadian Real Estate Association (CREA) and identify the quality of services provided by real estate professionals who are members of CREA. Used under license.