

# \$624,900 - 32084 Aventerra Road, Rural Rocky View County

---

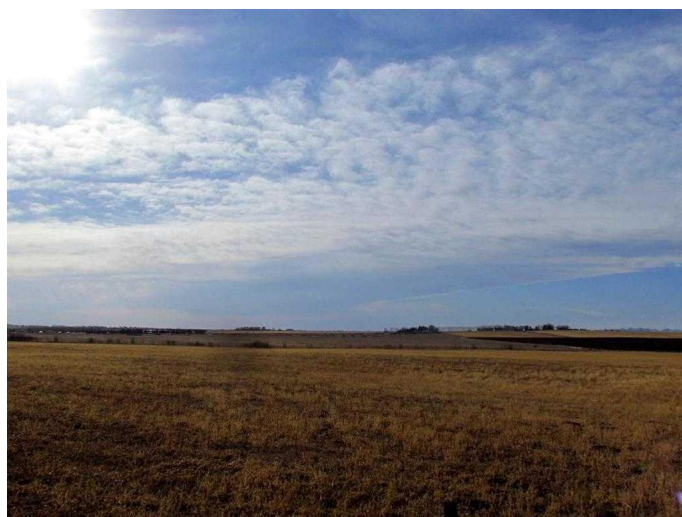
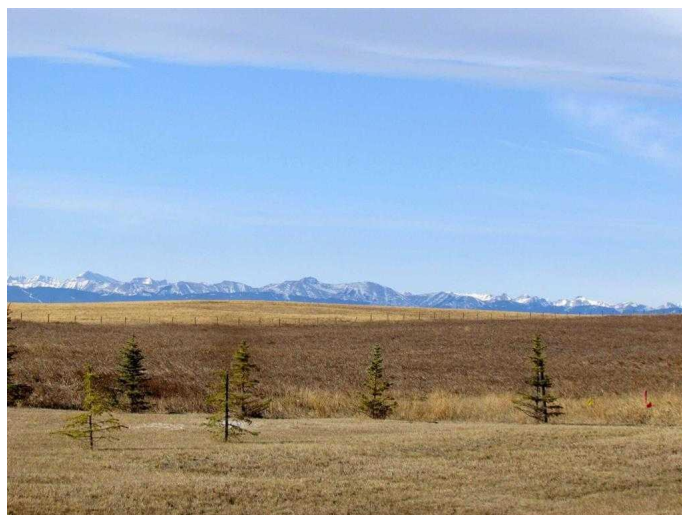
MLS® #A2192463

**\$624,900**

0 Bedroom, 0.00 Bathroom,  
Land on 2.00 Acres

Springbank, Rural Rocky View County, Alberta

Aventerra Estates is an exclusive community nestled in the scenic foothills of Springbank, offering stunning views of the Rocky Mountains. Just a short drive from the area, you'll find numerous golf courses and recreational spots, along with the ultimate outdoor destinations of Kananaskis Country and Banff National Park, where world-class ski resorts like Nakiska, Lake Louise, and Sunshine await. The downtown core of Calgary is only 20 minutes away, and families with school-age children will appreciate the convenient bus service right to their doorstep, as well as access to top-tier public and private schools, including Webber Academy, Edge School, Springbank Elementary, and Springbank High School. Aventerra Estates is also conveniently located near the University of Calgary, Mount Royal University, SAIT, the Children's and Foothills Hospitals, and major shopping malls. Bingham Crossing, a large retail development, is just minutes away. This is an ideal location to build your custom dream home on a 2-acre serviced lot. Build Your Dream Home Today!



## Essential Information

MLS® #	A2192463
Price	\$624,900
Bathrooms	0.00

Acres	2.00
Type	Land
Sub-Type	Residential Land
Status	Active

### Community Information

Address	32084 Aventerra Road
Subdivision	Springbank
City	Rural Rocky View County
County	Rocky View County
Province	Alberta
Postal Code	T3Z0A9

### Additional Information

Date Listed	February 12th, 2025
Days on Market	72
Zoning	CRES

### Listing Details

Listing Office	eXp Realty
----------------	------------

Data is supplied by Pillar 9â„¢ MLS® System. Pillar 9â„¢ is the owner of the copyright in its MLS® System. Data is deemed reliable but is not guaranteed accurate by Pillar 9â„¢. The trademarks MLS®, Multiple Listing Service® and the associated logos are owned by The Canadian Real Estate Association (CREA) and identify the quality of services provided by real estate professionals who are members of CREA. Used under license.