

\$3,400,000 - W-5.r-5,t-26,s-13,q-sw And W-5,r-5,t-26, S-13, Q-s, Rural Rocky View County

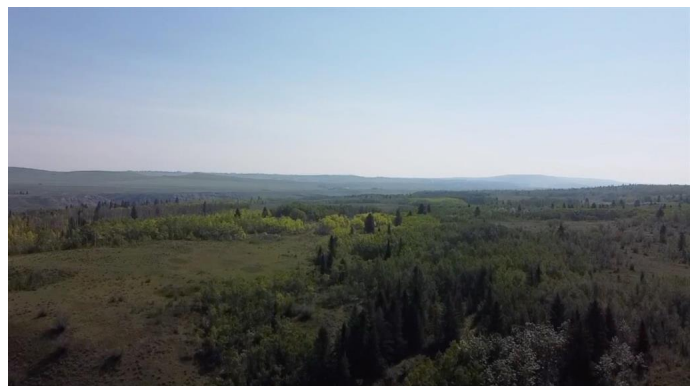
MLS® #A2188287

\$3,400,000

0 Bedroom, 0.00 Bathroom,
Land on 192.65 Acres

N/A, Rural Rocky View County, Alberta

This land is close to Cochrane, Currently zoned AG, Prime development location. This 192.65 Acres can be sold with adjoining property of 406 Acres. This property provides an excellent opportunity for a developer/investor. 598.65. ACRES of land in total. It is Located one mile West of Cochrane city limits. This has one or 2 miles if bought together of River frontage and Mountain views siding onto the Bow River, This land is extremely beautiful and gives you lots of options to work with. The land becomes more valuable as Cochrane expands to the West. It is in MD of Rocky View. where there is a high real estate demand in the surrounding areas.



Essential Information

MLS® #	A2188287
Price	\$3,400,000
Bathrooms	0.00
Acres	192.65
Type	Land
Sub-Type	Commercial Land
Status	Active

Community Information

Address	W-5.r-5,t-26,s-13,q-sw And W-5,r-5,t-26, S-13, Q-s
Subdivision	N/A
City	Rural Rocky View County

County	Rocky View County
Province	Alberta
Postal Code	T0L1N0

Additional Information

Date Listed	January 16th, 2025
Days on Market	231
Zoning	AG Gen

Listing Details

Listing Office	CIR Realty
----------------	------------

Data is supplied by Pillar 9â„¢ MLS® System. Pillar 9â„¢ is the owner of the copyright in its MLS® System. Data is deemed reliable but is not guaranteed accurate by Pillar 9â„¢. The trademarks MLS®, Multiple Listing Service® and the associated logos are owned by The Canadian Real Estate Association (CREA) and identify the quality of services provided by real estate professionals who are members of CREA. Used under license.