

\$129,900 - Pt Ne 06-49-26 W3, Marshall

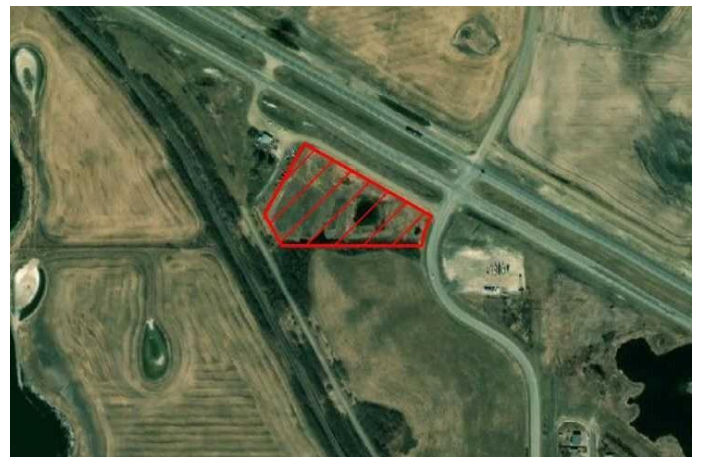
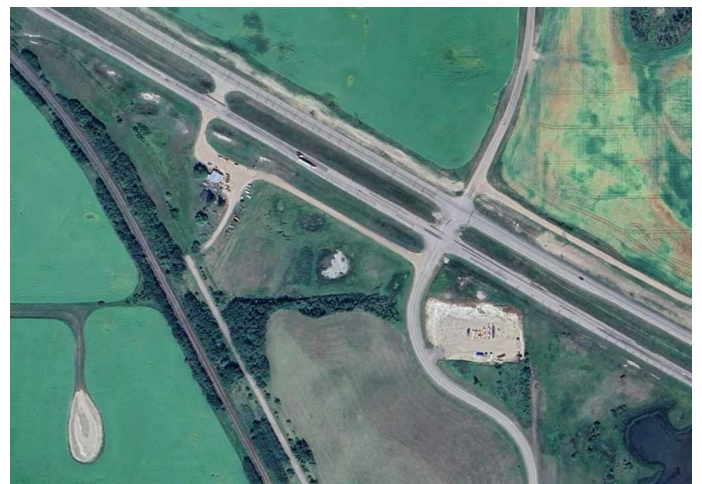
MLS® #A2188032

\$129,900

0 Bedroom, 0.00 Bathroom,
Land on 5.18 Acres

NONE, Marshall, Saskatchewan

Commercial land opportunity available adjacent to Town of Marshall, the railway tracks and Highway 16. Over 5 acres of developable land with many commercial and business applications. This would make a great location for service company, commercial shop, yard space etc. With easy access to the highway and also the added opportunity being beside the railway tracks. The property is under the Municipality of the Town of Marshall for business and land use approvals.



Essential Information

MLS® #	A2188032
Price	\$129,900
Bathrooms	0.00
Acres	5.18
Type	Land
Sub-Type	Commercial Land
Status	Active

Community Information

Address	Pt Ne 06-49-26 W3
Subdivision	NONE
City	Marshall
County	Saskatchewan
Province	Saskatchewan
Postal Code	S0M 1R0

Additional Information

Date Listed February 11th, 2025

Days on Market 76

Zoning Commercial

Listing Details

Listing Office MUSGRAVE AGENCIES

Data is supplied by Pillar 9â,,ç MLSÂ® System. Pillar 9â,,ç is the owner of the copyright in its MLSÂ® System. Data is deemed reliable but is not guaranteed accurate by Pillar 9â,,ç. The trademarks MLSÂ®, Multiple Listing ServiceÂ® and the associated logos are owned by The Canadian Real Estate Association (CREA) and identify the quality of services provided by real estate professionals who are members of CREA. Used under license.