

# \$229,000 - 13 Kivimaa Drive, Turtle Lake

MLS® #A2187055

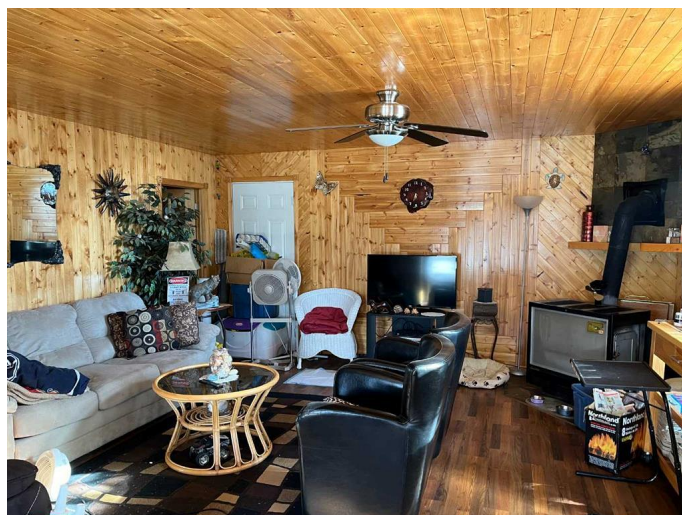
**\$229,000**

2 Bedroom, 1.00 Bathroom, 624 sqft

Residential on 0.11 Acres

NONE, Turtle Lake, Saskatchewan

Turtle Lake, Saskatchewan 3 season cabin for sale in the Resort Village of Kivimaa Moonlight Bay. Built in the early 1970s this cabin has lots of recent updates including hardy board siding, windows, pine interior finishes, kitchen cabinetry, water lines and laminate flooring. It sits on a nicely treed low maintenance lot close to the lake. It features an open plan living, kitchen and dining area plus 2 bedrooms and a 3-piece bathroom. The cabin has electric baseboard heat and the wood burning stove is perfect for those cool evenings. The recently updated deck wraps around the side and back of the cabin. It is made from treated lumber and composite decking. There is a storage shed in the backyard which includes a beautifully finished 2nd floor bunkhouse complete with spiral staircase and private deck. Water comes from a bored well. Septic is a holding tank. This cabin is on owned and titled land. Amenities include the beautiful public beach, boat launch, playground and mini golf. Plus the golf course is just a few minutes down the road. Turtle Lake is located about 1 & 1/2 hours from Lloydminster, 2 & 1/2 from Saskatoon, 3 hours from Kindersley and just under 4 hours from Edmonton. Call to view this wonderful holiday retreat



## Essential Information

MLS® #

A2187055

Price	\$229,000
Bedrooms	2
Bathrooms	1.00
Full Baths	1
Square Footage	624
Acres	0.11
Type	Residential
Sub-Type	Detached
Style	Cottage/Cabin
Status	Active

### Community Information

Address	13 Kivimaa Drive
Subdivision	NONE
City	Turtle Lake
County	Saskatchewan
Province	Saskatchewan
Postal Code	S0M 1J0

### Amenities

Parking Spaces	2
Parking	Off Street

### Interior

Interior Features	Ceiling Fan(s), Open Floorplan
Appliances	Microwave, Refrigerator, Stove(s)
Heating	Baseboard, Electric, Wood, Wood Stove
Cooling	None
Fireplace	Yes
# of Fireplaces	1
Fireplaces	Wood Burning Stove
Basement	None

### Exterior

Exterior Features	None
Lot Description	Back Yard, Front Yard, Rectangular Lot, Treed
Roof	Asphalt Shingle
Construction	Wood Frame
Foundation	Other

## Additional Information

Date Listed	January 12th, 2025
Days on Market	162
Zoning	RESIDENTIAL

## Listing Details

Listing Office	RE/MAX OF LLOYDMINSTER
----------------	------------------------

Data is supplied by Pillar 9â„¢ MLS® System. Pillar 9â„¢ is the owner of the copyright in its MLS® System. Data is deemed reliable but is not guaranteed accurate by Pillar 9â„¢. The trademarks MLS®, Multiple Listing Service® and the associated logos are owned by The Canadian Real Estate Association (CREA) and identify the quality of services provided by real estate professionals who are members of CREA. Used under license.