

\$239,900 - 701, 314 14 Street Nw, Calgary

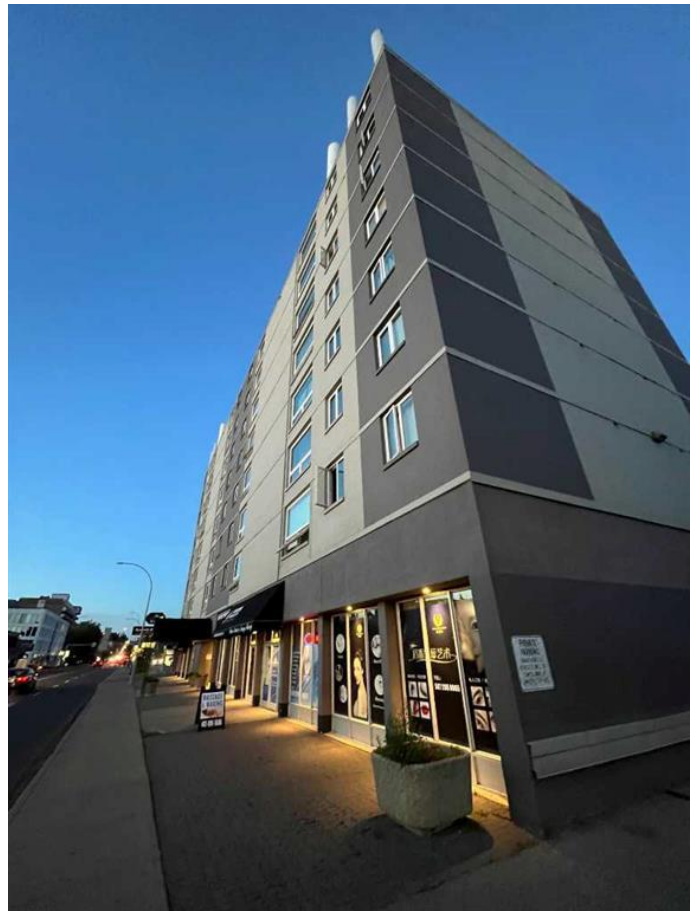
MLS® #A2172756

\$239,900

2 Bedroom, 1.00 Bathroom, 765 sqft
Residential on 0.00 Acres

Hillhurst, Calgary, Alberta

In the sought-after community of Hillhurst, this spacious 2-bedroom corner END UNIT is located on the QUIET side of the building on the 7th floor. It overlooks the trees and offers exceptional city views day and night. The renovation opened up the wall from the kitchen to the living room. Features include all laminate flooring, ceramic tile in the bathroom, and vinyl windows. There is secure outside bike storage and a card-operated laundry system on EACH FLOOR. One assigned parking stall. This well-kept building is situated in the KENSINGTON area, just minutes from the river pathways and all amenities. Great value!



Built in 1969

Essential Information

MLS® #	A2172756
Price	\$239,900
Bedrooms	2
Bathrooms	1.00
Full Baths	1
Square Footage	765
Acres	0.00
Year Built	1969
Type	Residential
Sub-Type	Apartment
Style	High-Rise (5+)
Status	Active

Community Information

Address 701, 314 14 Street Nw
Subdivision Hillhurst
City Calgary
County Calgary
Province Alberta
Postal Code T2N 1Z8

Amenities

Amenities Elevator(s), Parking, Coin La
Parking Spaces 1
Parking Stall

Interior

Interior Features No Smoking Home, See Rem
Appliances Dishwasher, Electric Stove, F
Heating Baseboard, Natural Gas
Cooling None
of Stories 8

Exterior

Exterior Features None
Roof Tar/Gravel
Construction Concrete

Additional Information

Date Listed October 12th, 2024
Days on Market 179
Zoning C-COR2

Listing Details

Listing Office Classic Property Management & Realty Ltd

Data is supplied by Pillar 9â,,ç MLSÂ® System. Pillar 9â,,ç is the owner of the copyright in its MLSÂ® System. Data is deemed reliable but is not guaranteed accurate by Pillar 9â,,ç. The trademarks MLSÂ®, Multiple Listing ServiceÂ® and the associated logos are owned by The Canadian Real Estate Association (CREA) and identify the quality of services provided by real estate professionals who are members of CREA. Used under license.

