

\$119,900 - 123, 67417 Mcgrane Road, Lac La Biche

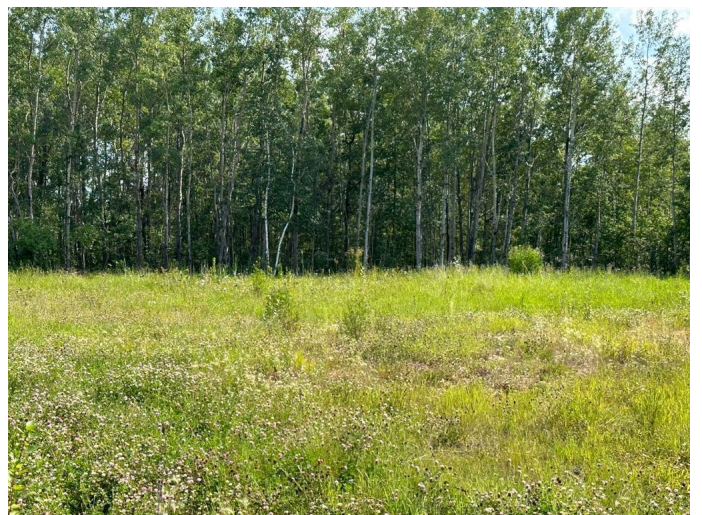
MLS® #A2158537

\$119,900

0 Bedroom, 0.00 Bathroom,
Land on 1.18 Acres

Lac La Biche, Lac La Biche, Alberta

Are you looking for a private place to park and rv and then build a residence? This 1.18 acre lot has room to build a home, garage, and space for parking, a garden, and more! Checkout this great lot located at the Lac La Biche Mission Phase 1! The lot is partially cleared with some mature trees. There is power, gas, water, and sewer services at the property line. This subdivision is just a few minutes out of Lac La Biche on paved roads! The boat launch is near by as well, so you can be on the water in minutes! The neighboring lot is also for sale in case you would love more space, or have a great neighbor or friend who could buy next door!



Essential Information

| | |
|-----------|------------------|
| MLS® # | A2158537 |
| Price | \$119,900 |
| Bathrooms | 0.00 |
| Acres | 1.18 |
| Type | Land |
| Sub-Type | Residential Land |
| Status | Active |

Community Information

| | |
|-------------|-------------------------|
| Address | 123, 67417 Mcgrane Road |
| Subdivision | Lac La Biche |
| City | Lac La Biche |
| County | Lac La Biche County |

| | |
|-------------|---------|
| Province | Alberta |
| Postal Code | T0A 2C2 |

Additional Information

| | |
|----------------|---------------------|
| Date Listed | August 16th, 2024 |
| Days on Market | 254 |
| Zoning | Country Residential |

Listing Details

| | |
|----------------|------------------------|
| Listing Office | RE/MAX LA BICHE REALTY |
|----------------|------------------------|

Data is supplied by Pillar 9â„¢ MLSÂ® System. Pillar 9â„¢ is the owner of the copyright in its MLSÂ® System. Data is deemed reliable but is not guaranteed accurate by Pillar 9â„¢. The trademarks MLSÂ®, Multiple Listing ServiceÂ® and the associated logos are owned by The Canadian Real Estate Association (CREA) and identify the quality of services provided by real estate professionals who are members of CREA. Used under license.