

# \$1,550,000 - Pt. Of Nw-28-71-5-w6, Rural Grande Prairie No. 1, County of

MLS® #A2138941

**\$1,550,000**

0 Bedroom, 0.00 Bathroom,  
Agri-Business on 149.00 Acres

NONE, Rural Grande Prairie No. 1, County of,  
Alberta

149+/- acres across from the road from Carriage Lane Estates. Excellent development quarter, with no pipelines or well sites on this property. Services close by. This property has remained in the county after annexation. Great potential!!

## Essential Information

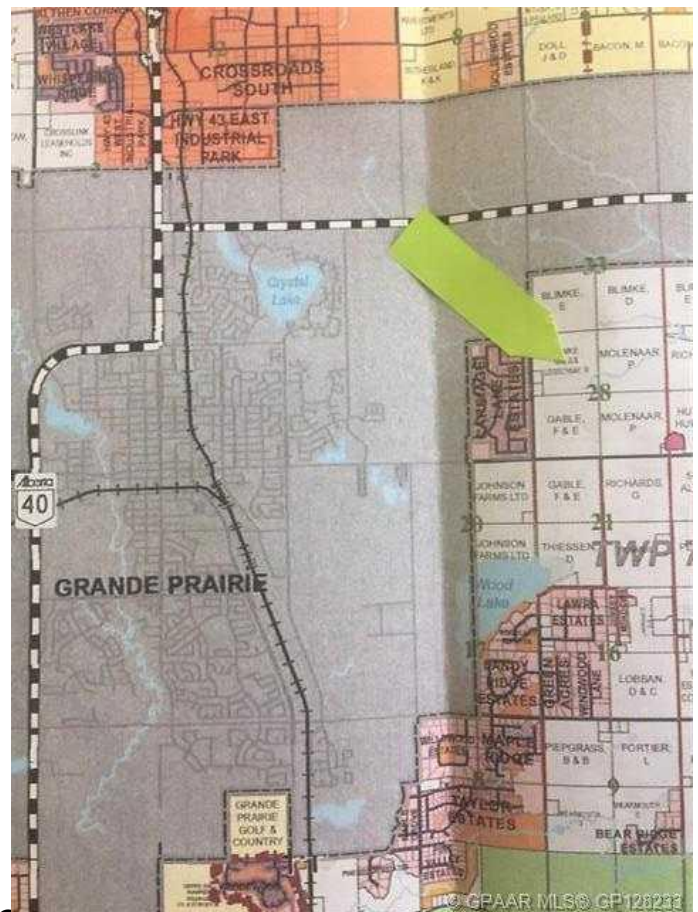
MLS® #	A2138941
Price	\$1,550,000
Bathrooms	0.00
Acres	149.00
Type	Agri-Business
Sub-Type	Agriculture
Status	Active

## Community Information

Address	Pt. Of Nw-28-71-5-w6
Subdivision	NONE
City	Rural Grande Prairie No. 1, County of
County	Grande Prairie No. 1, County of
Province	Alberta
Postal Code	T8V 2Z8

## Additional Information

Date Listed	June 6th, 2024
Days on Market	351



Zoning	AG
--------	----

## **Listing Details**

Listing Office	All Peace Realty Ltd.
----------------	-----------------------

Data is supplied by Pillar 9â„¢ MLS® System. Pillar 9â„¢ is the owner of the copyright in its MLS® System. Data is deemed reliable but is not guaranteed accurate by Pillar 9â„¢. The trademarks MLS®, Multiple Listing Service® and the associated logos are owned by The Canadian Real Estate Association (CREA) and identify the quality of services provided by real estate professionals who are members of CREA. Used under license.